

BOLT CLIP DETAIL

1.1/2" = 1'-0"



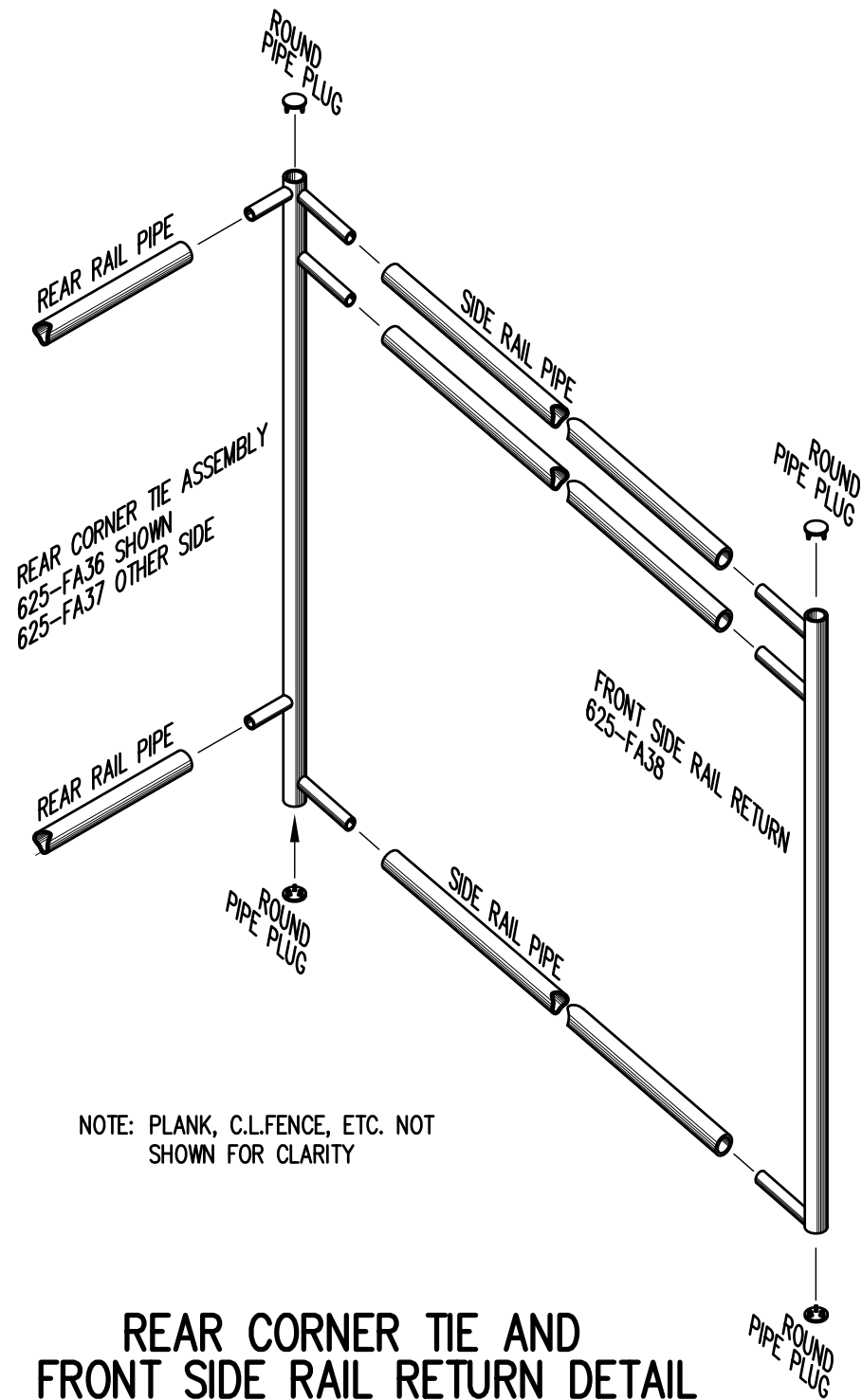
FIG.1

FIG.2

- 1) LOCATE THE CHANNEL END CAP AS SHOWN IN FIG. 1.
- 2) TAP END CAP INTO PLACE WITH RUBBER Mallet OR SOFT WOOD. FIG.2
- 3) DRILL TWO 5/32" HOLES THROUGH THE BOTTOM FLANGE AND THE BOTTOM OUTSIDE PLANK FLANGES. INSTALL TWO 3/16" x 1/4" RIVETS. (2 PER PLANK)

END CAP DETAIL

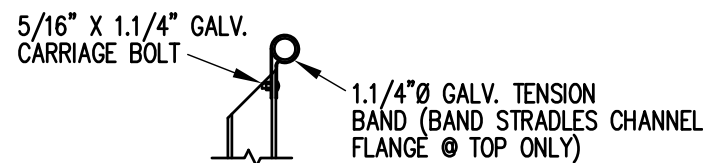
N.T.S.



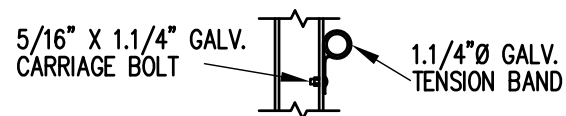
NOTE: PLANK, C.L.FENCE, ETC. NOT SHOWN FOR CLARITY

REAR CORNER TIE AND FRONT SIDE RAIL RETURN DETAIL

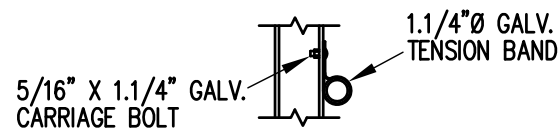
3/4" = 1'-0"



TOP RAIL

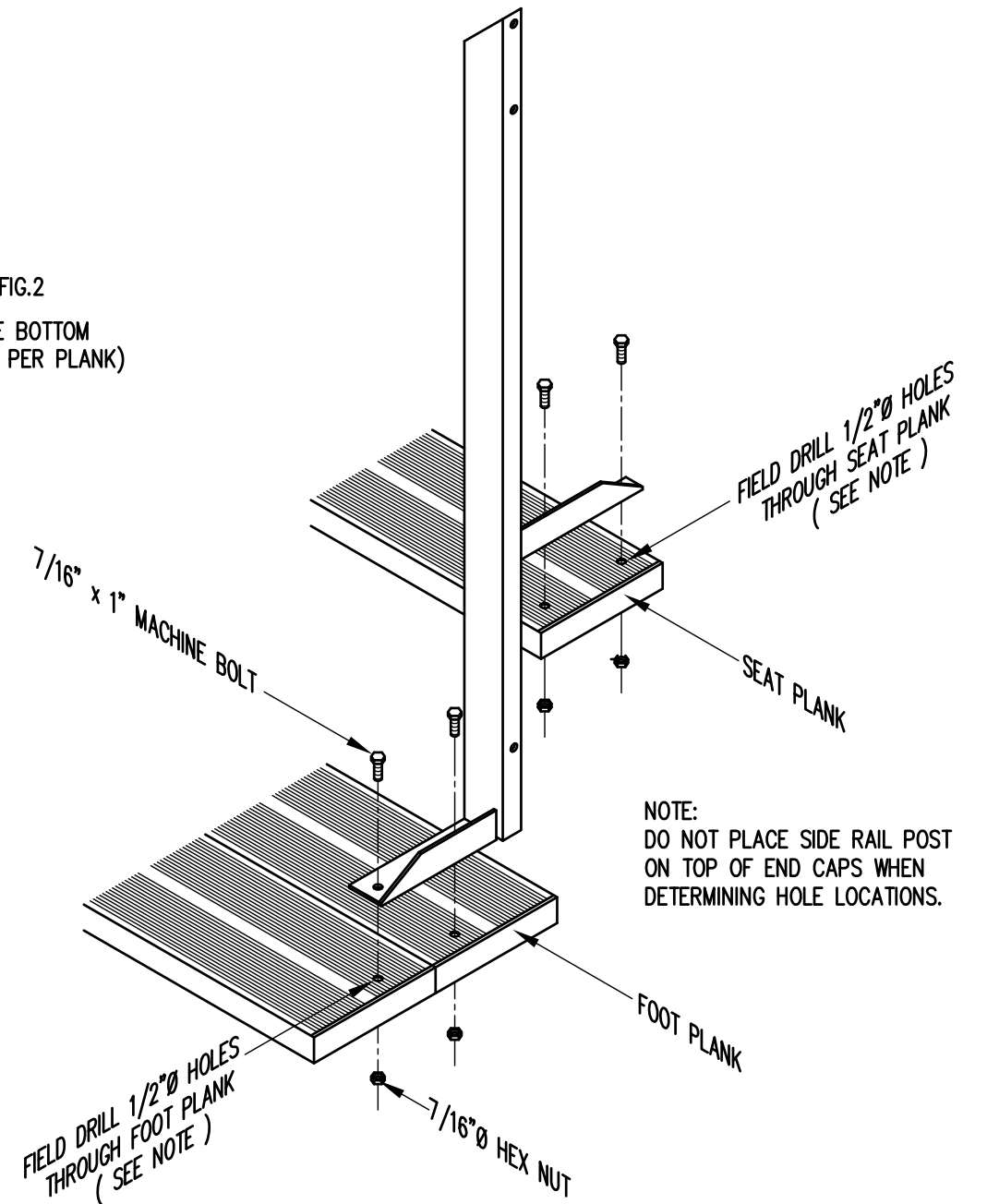


MID RAIL



LOWER RAIL

3/4" = 1'-0"

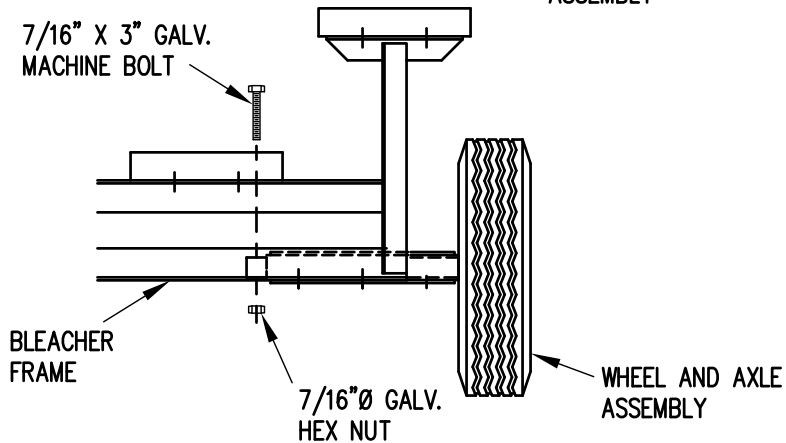
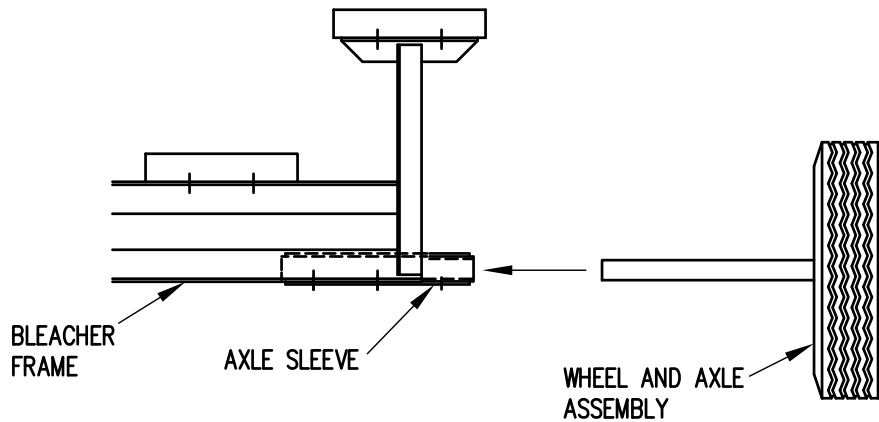


NOTE: DO NOT PLACE SIDE RAIL POST ON TOP OF END CAPS WHEN DETERMINING HOLE LOCATIONS.

TYP. SIDE RAIL POST ATTACHMENT

1" = 1'-0"

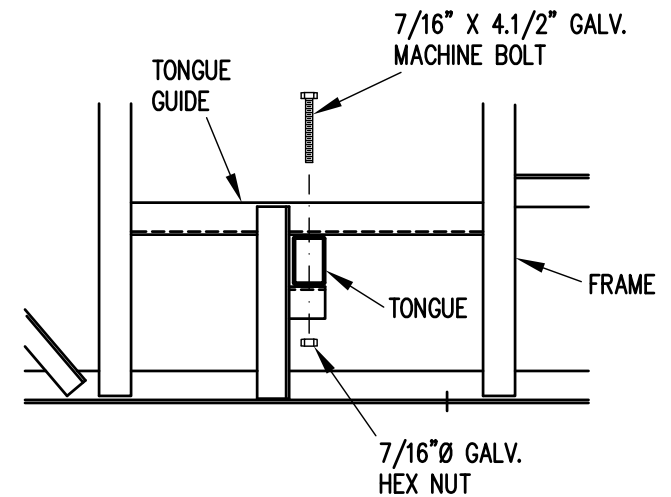
		P.O. BOX 118 GENEVA, ALABAMA 36340 334-684-2296			
		SCALE AS NOTED	REVISIONS	BY	DATE
DATE	11/2/00	SIDE GUARDRAIL TO OUTSIDE		WHW	03/02
DR'N	SS	CKD			
AP'VD					
TITLE				NO.	
TYPICAL DETAILS				684-E1990	



1. ELEVATE BLEACHER TO RECEIVE WHEEL UNITS.
2. INSERT WHEEL AND AXLE ASSEMBLY INTO AXLE SLEEVE AS SHOWN.
3. INSERT 7/16" X 3" GALVANIZED MACHINE BOLT THROUGH AXLE TO SECURE IN AXLE SLEEVE.

WHEEL AND AXLE ATTACHMENT

1" = 1'-0"



1. INSERT TONGUE THROUGH TONGUE GUIDES.
2. ATTACH TONGUE TO TONGUE BRACKETS WITH 7/16" X 4 1/2" GALVANIZED MACHINE BOLTS AS SHOWN.
3. TIGHTEN SECURELY.

TONGUE ATTACHMENT

1" = 1'-0"

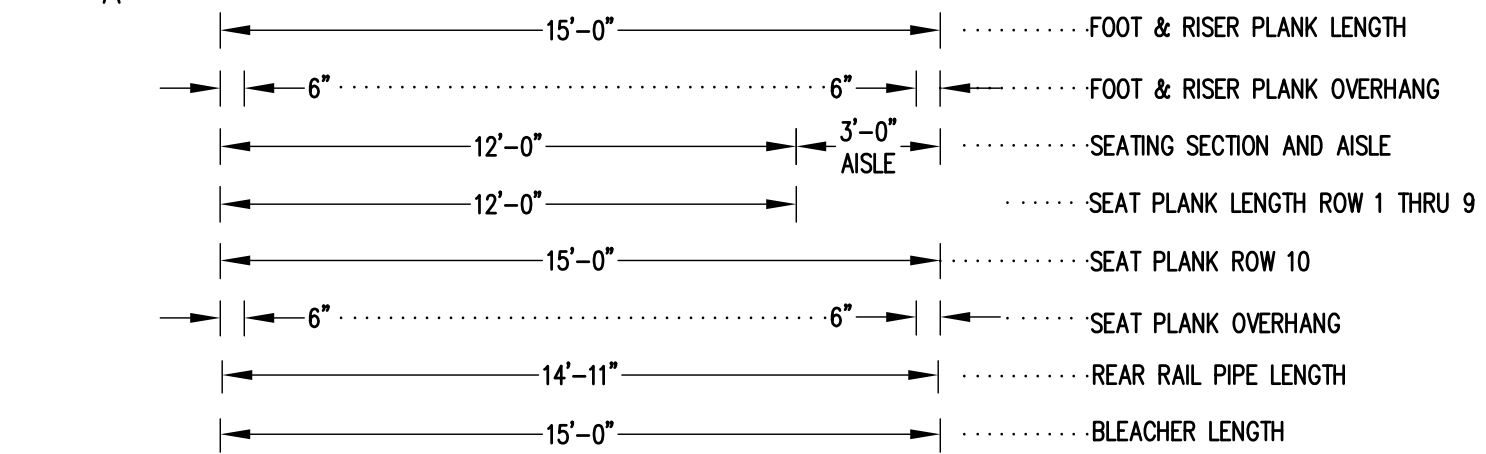
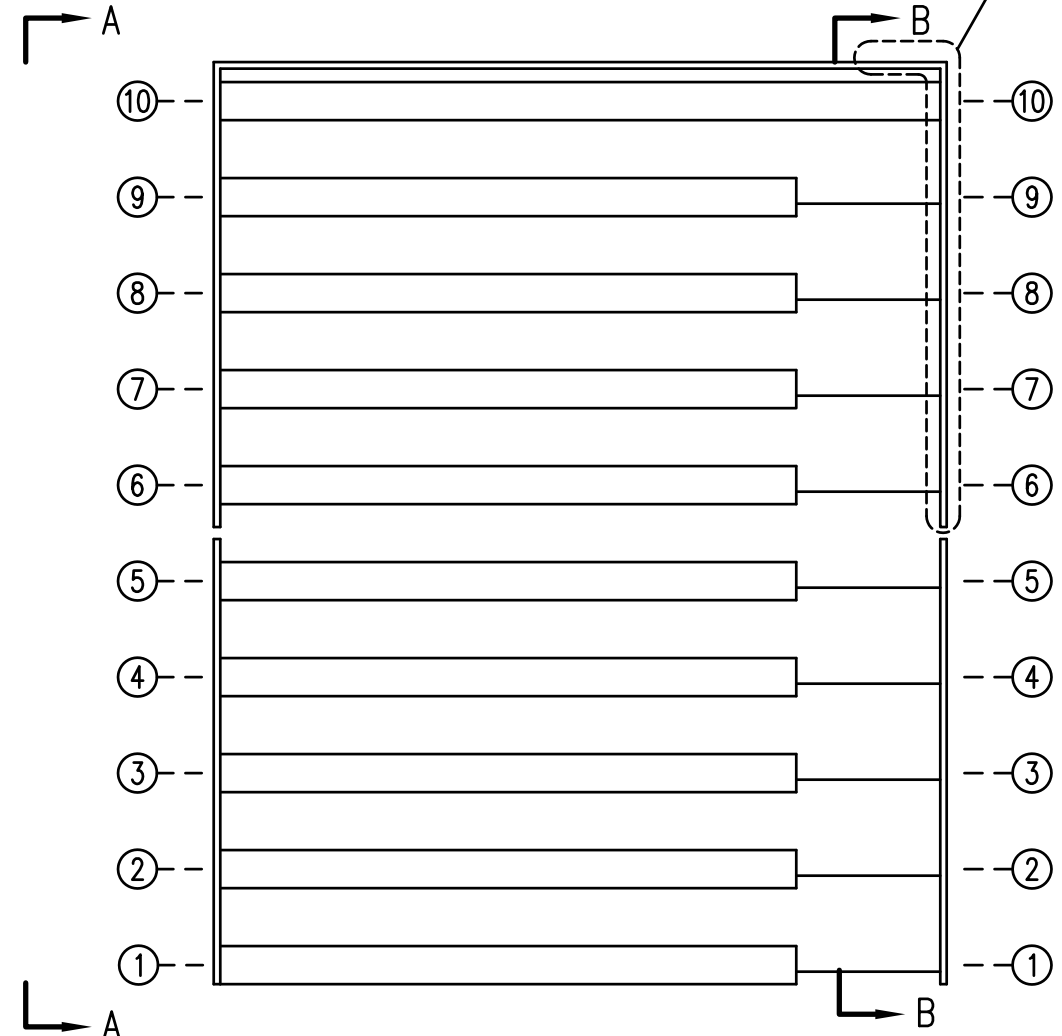


Outdoor
Aluminum

P.O. BOX 118
GENEVA, ALABAMA 36340
334-684-2296

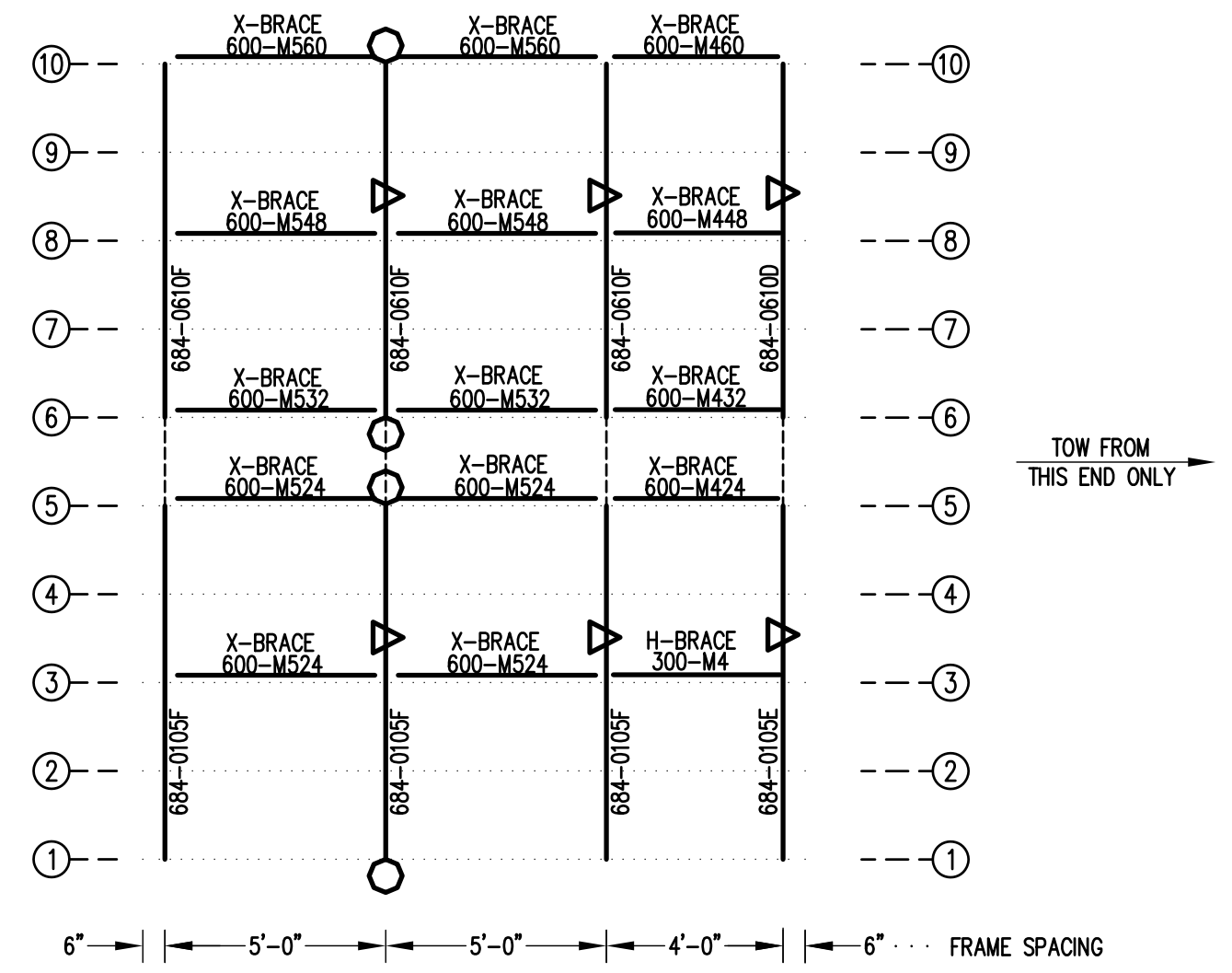
SCALE	REVISIONS	BY	DATE
1"=1'-0"			
DATE			
9/25/00			
DR'N	SS	CKD	
AP'VD			
TITLE	NO.		
1-5 AND 6-10 ROW TRANSPORT COMPONENTS ATTACHMENT DETAILS	684-E1991		

SEE REAR CORNER TIE
ASSEMBLY DETAIL
SEE DWG. 684-E1990



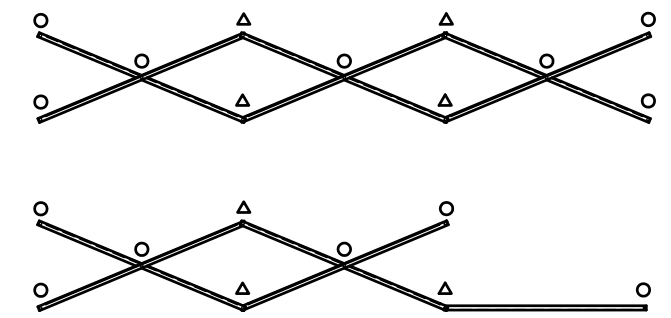
SEATING PLAN
1/4" = 1'-0"
82 NET SEATS @ 18" PER SEAT

○ DENOTES AXLE SLEEVE LOCATIONS
△ DENOTES TONGUE GUIDE LOCATIONS



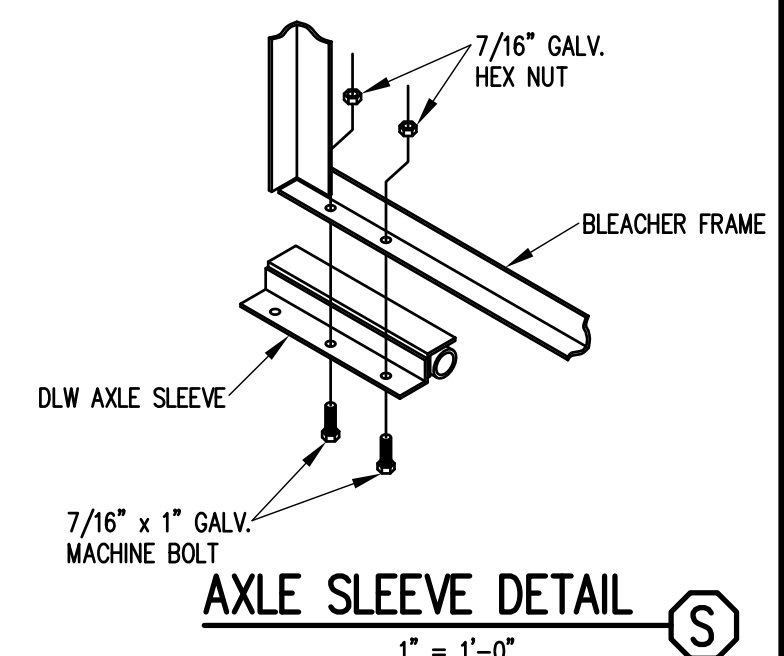
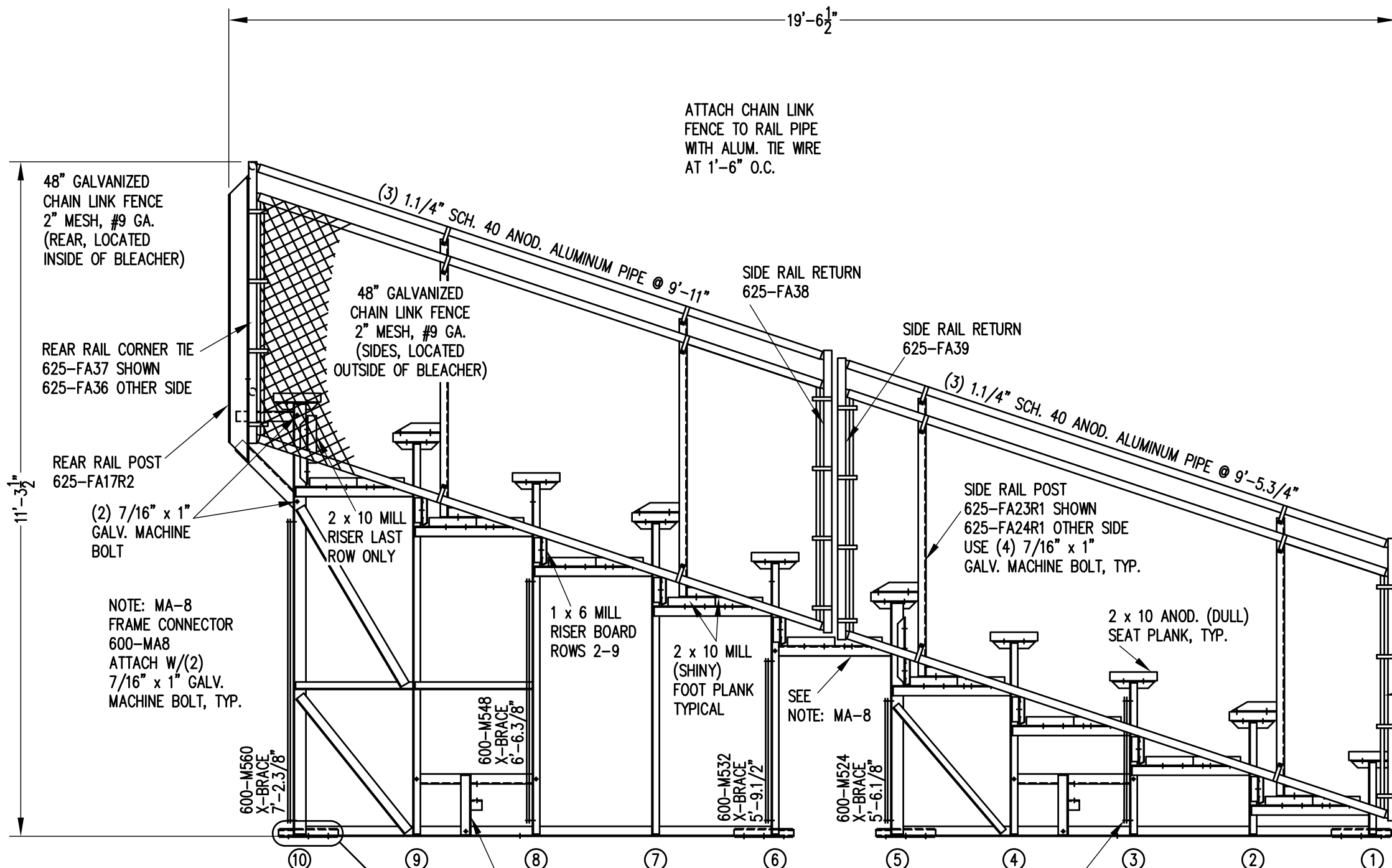
FRAMING PLAN
1/4" = 1'-0"

TOW FROM
THIS END ONLY →



X-BRACE DETAIL
N.T.S.
○ 7/16" X 1" GALV. MACH. BOLT
△ 7/16" X 1.1/2" GALV. MACH. BOLT

		P.O. BOX 118 GENEVA, ALABAMA 36340 334-684-2296			
		SCALE AS NOTED	REVISIONS	BY	DATE
DATE	05/12/09				
DR'N	WRB	CKD			
AP'VD					
TITLE				NO.	
TDLWA 10-15 SEAT/FRAME PLAN W/AISLE				684-E2104	



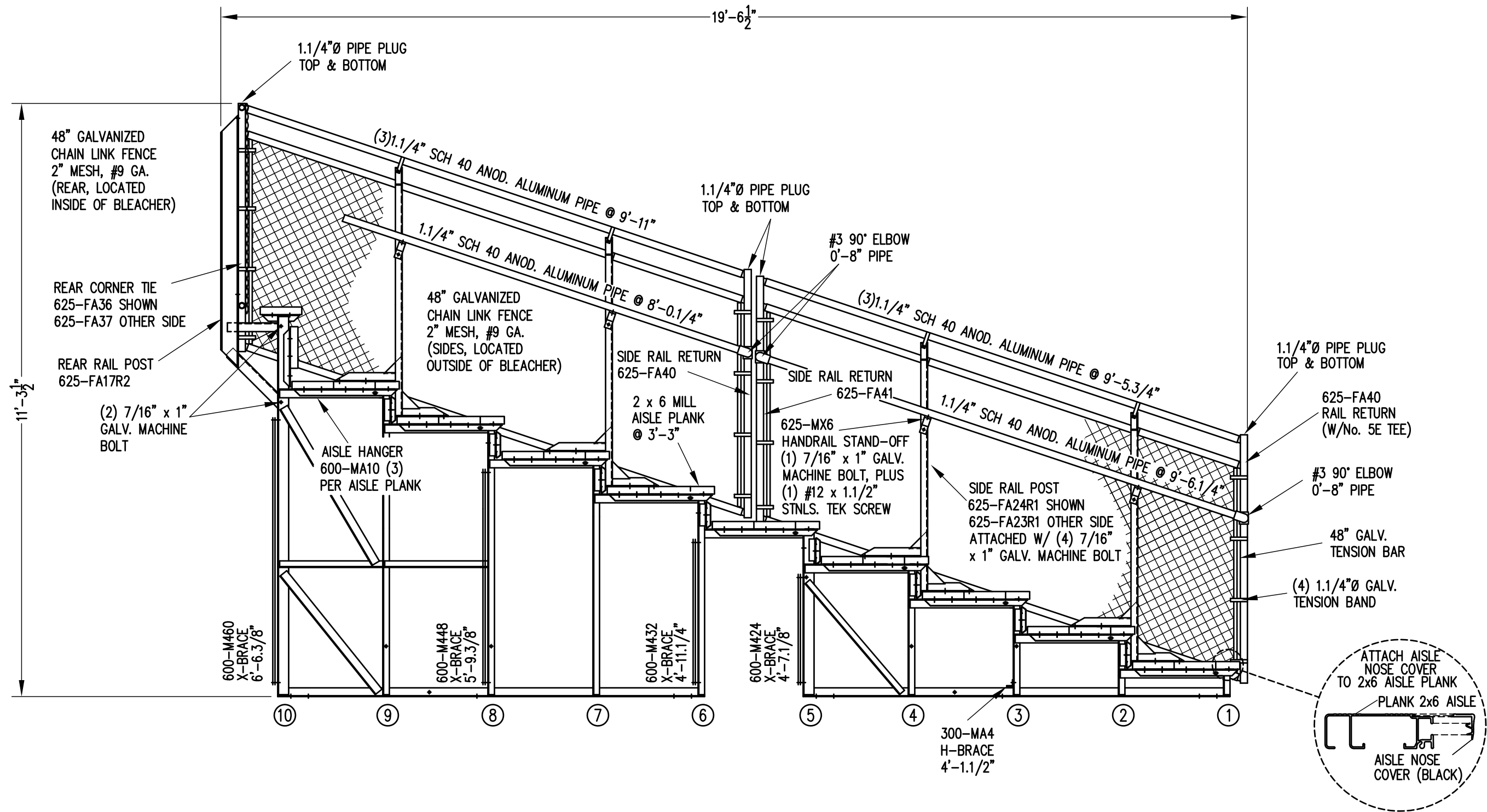
AXLE SLEEVE DETAIL
1" = 1'-0" S

VIEW AA
1/2" = 1'-0"


NOTE: MA-8
FRAME CONNECTOR
600-MA8
ATTACH W/(2)
7/16" x 1" GALV.
MACHINE BOLT, TYP.

1" TONGUE GUIDE
ATTACH WITH (3)
7/16" x 1" GALV.
MACHINE BOLT, TYP.
SEE FRAMING PLAN
FOR LOCATIONS

		P.O. BOX 118 GENEVA, ALABAMA 36340 334-684-2296	
SCALE	AS NOTED	REVISIONS	BY DATE
DATE	11/29/06		
DR'N	WRB CKD		
AP'VD			
TITLE		NO.	
TDLWA 10 ROW VIEW DOUBLE FOOTBOARD		684-E2127	



SECTION BB
1/2" = 1'-0"

		Outdoor Aluminum P.O. BOX 118 GENEVA, ALABAMA 36340 334-684-2296		
				SCALE
DATE	11/29/06	CHANGED 2.1/4" PIPE TO 0'-8"	CES	7/17/07
DR'N	WRB	CKD		
AP'VD				
TITLE			NO.	
TDLWA 10 ROW END AISLE SECTION			684-E2128	