

BOLT CLIP DETAIL

1.1/2" = 1'-0"



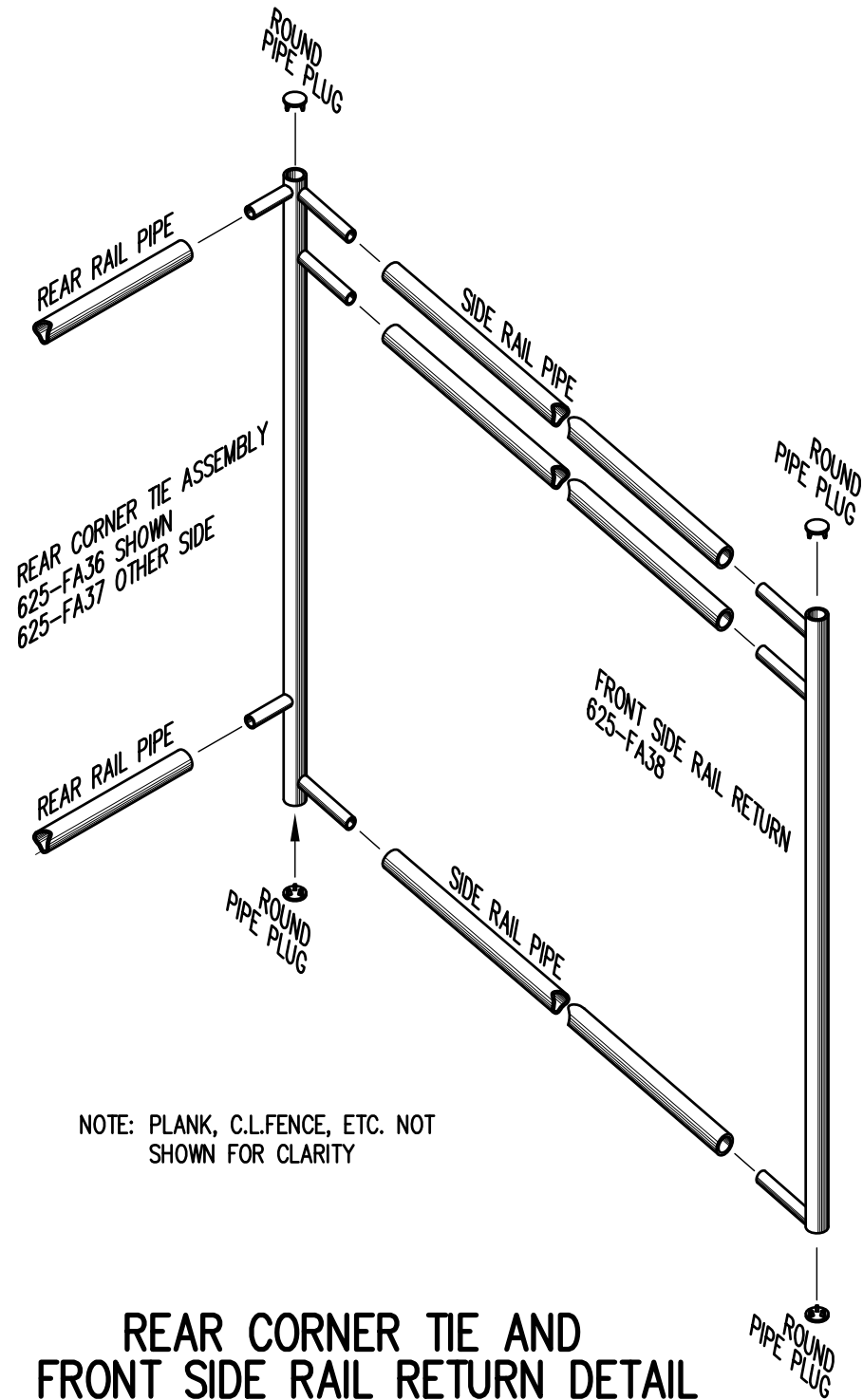
FIG.1

FIG.2

- 1) LOCATE THE CHANNEL END CAP AS SHOWN IN FIG. 1.
- 2) TAP END CAP INTO PLACE WITH RUBBER Mallet OR SOFT WOOD. FIG.2
- 3) DRILL TWO 5/32" HOLES THROUGH THE BOTTOM FLANGE AND THE BOTTOM OUTSIDE PLANK FLANGES. INSTALL TWO 3/16" x 1/4" RIVETS. (2 PER PLANK)

END CAP DETAIL

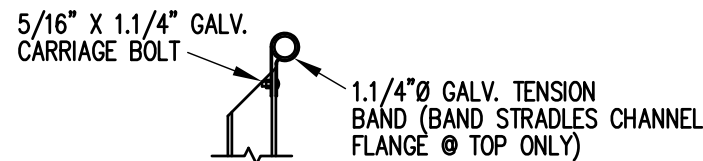
N.T.S.



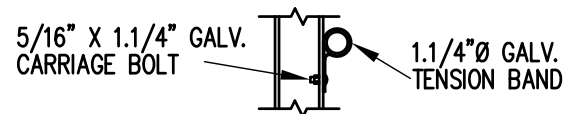
NOTE: PLANK, C.L.FENCE, ETC. NOT SHOWN FOR CLARITY

REAR CORNER TIE AND FRONT SIDE RAIL RETURN DETAIL

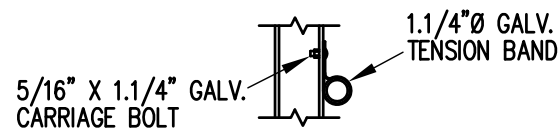
3/4" = 1'-0"



TOP RAIL

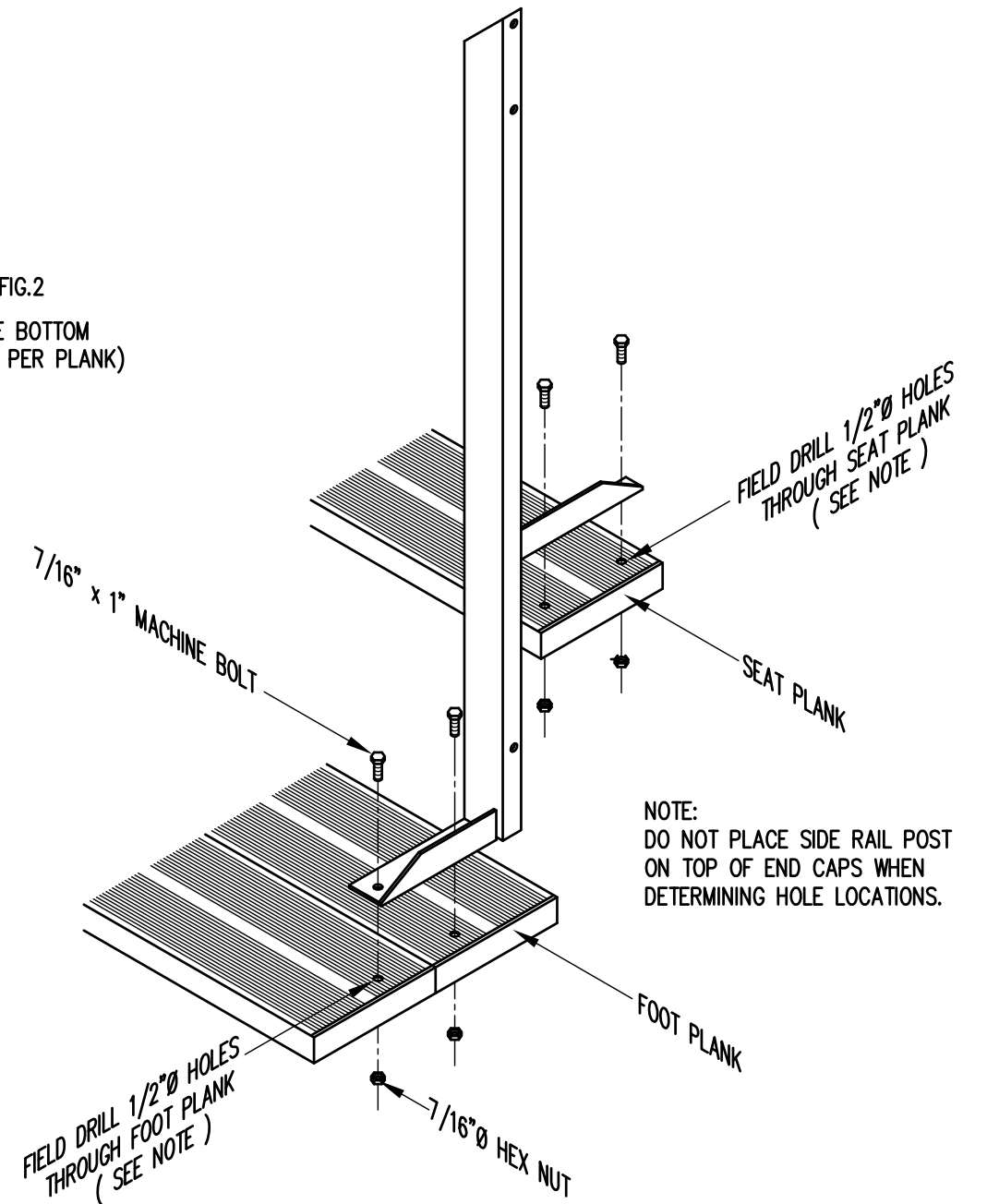


MID RAIL



LOWER RAIL

3/4" = 1'-0"

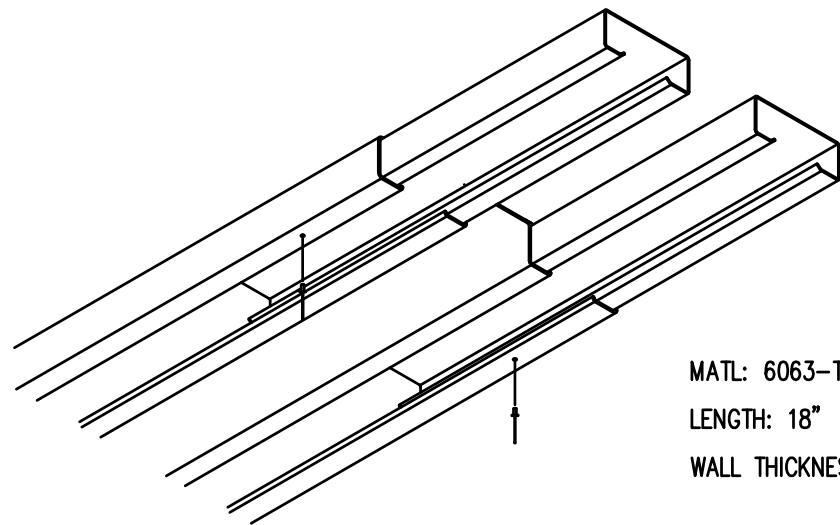


NOTE: DO NOT PLACE SIDE RAIL POST ON TOP OF END CAPS WHEN DETERMINING HOLE LOCATIONS.

TYP. SIDE RAIL POST ATTACHMENT

1" = 1'-0"

| | | | | | |
|-----------------|---------|--|--|----------------|-----------|
| | | Outdoor Aluminum P.O. BOX 118 GENEVA, ALABAMA 36340 334-684-2296 | | | |
| | | | | SCALE AS NOTED | REVISIONS |
| DATE | 11/2/00 | SIDE GUARDRAIL TO OUTSIDE | | WHW | 03/02 |
| DR'N | SS | CKD | | | |
| AP'VD | | | | | |
| TITLE | | | | NO. | |
| TYPICAL DETAILS | | | | 684-E1990 | |



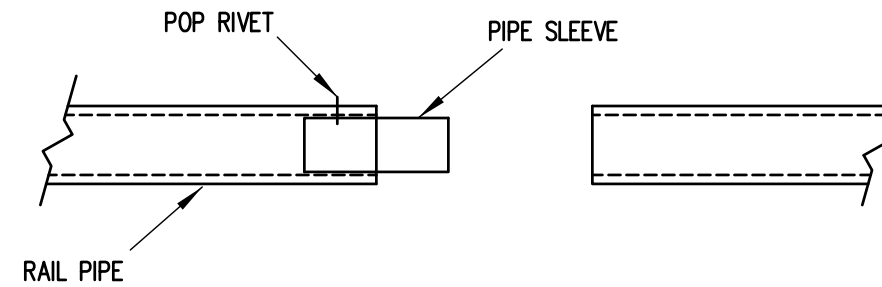
MATL: 6063-T6 ALUMN.
 LENGTH: 18"
 WALL THICKNESS: .062"

- 1) INSERT SLEEVES APPROXIMATELY HALFWAY INTO THE PLANK WITH THE ENDS STAGGERED ABOUT 1/2". FASTEN SLEEVE WITH (1) ALUMINUM POP RIVET.
- 2) SLIDE THE END OF THE ADJOINING PLANK OVER THE SLEEVES UNTIL THE TWO PLANKS ARE SNUG.

NOTE: SLEEVES SHOULD BE ATTACHED ON ONLY ONE END TO ALLOW FOR EXPANSION.

PLANK SPLICE SLEEVE ASSEMBLY

(TYP. @ ALL PLANK SPLICES)



PIPE SLEEVE ASSEMBLY

1.1/2" = 1' 0"

- 1) INSERT PIPE SLEEVE APPROXIMATELY HALFWAY INTO THE RAIL PIPE. FASTEN PIPE SLEEVE WITH (1) ALUMINUM POP RIVET (5/32" X 5/8")
- 2) SLIDE THE END OF THE ADJOINING RAILPIPE OVER THE PIPE SLEEVE UNTIL THE TWO RAILS ARE FLUSH.

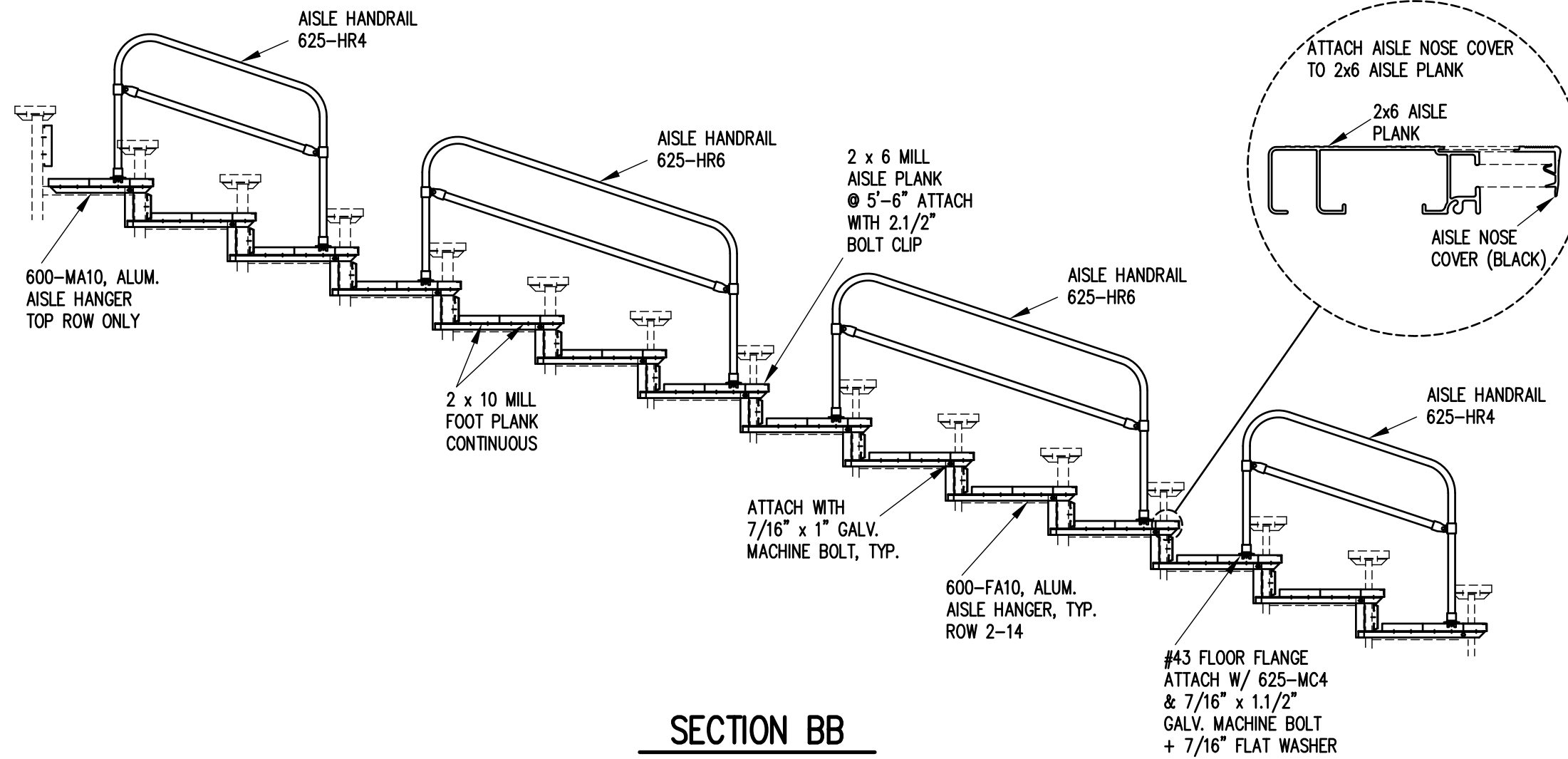
NOTE: PIPE SLEEVES SHOULD BE ATTACHED ON ONLY ONE END TO ALLOW FOR EXPANSION.



Outdoor
Aluminum


P.O. BOX 118
 GENEVA, ALABAMA 36340
 334-684-2296

| | | | | |
|-------|------------------------|-----------|----|-------------------------|
| SCALE | AS NOTED | REVISIONS | BY | DATE |
| DATE | 11/6/00 | | | |
| DR'N | SS | CKD | | |
| AP'VD | | | | |
| TITLE | SPLICE SLEEVE ASSEMBLY | | | NO. 684-E1994 |

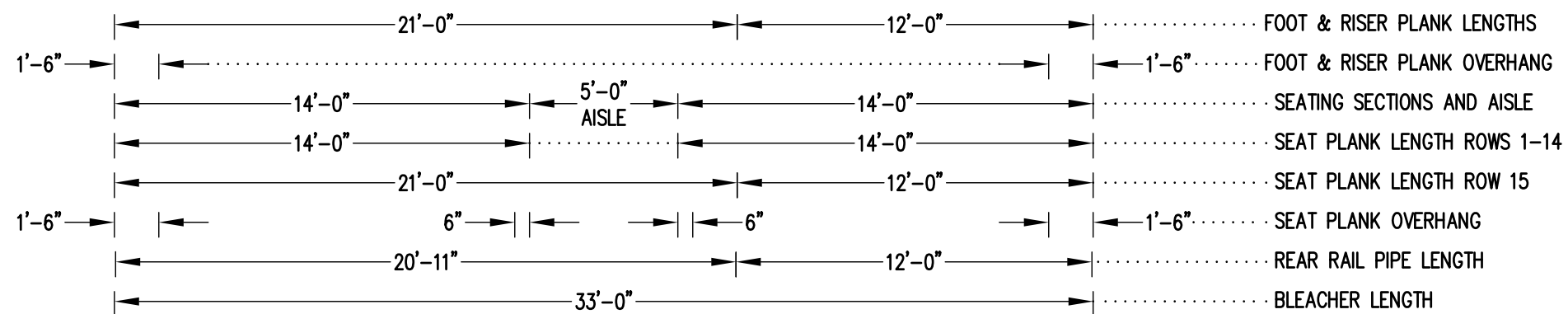
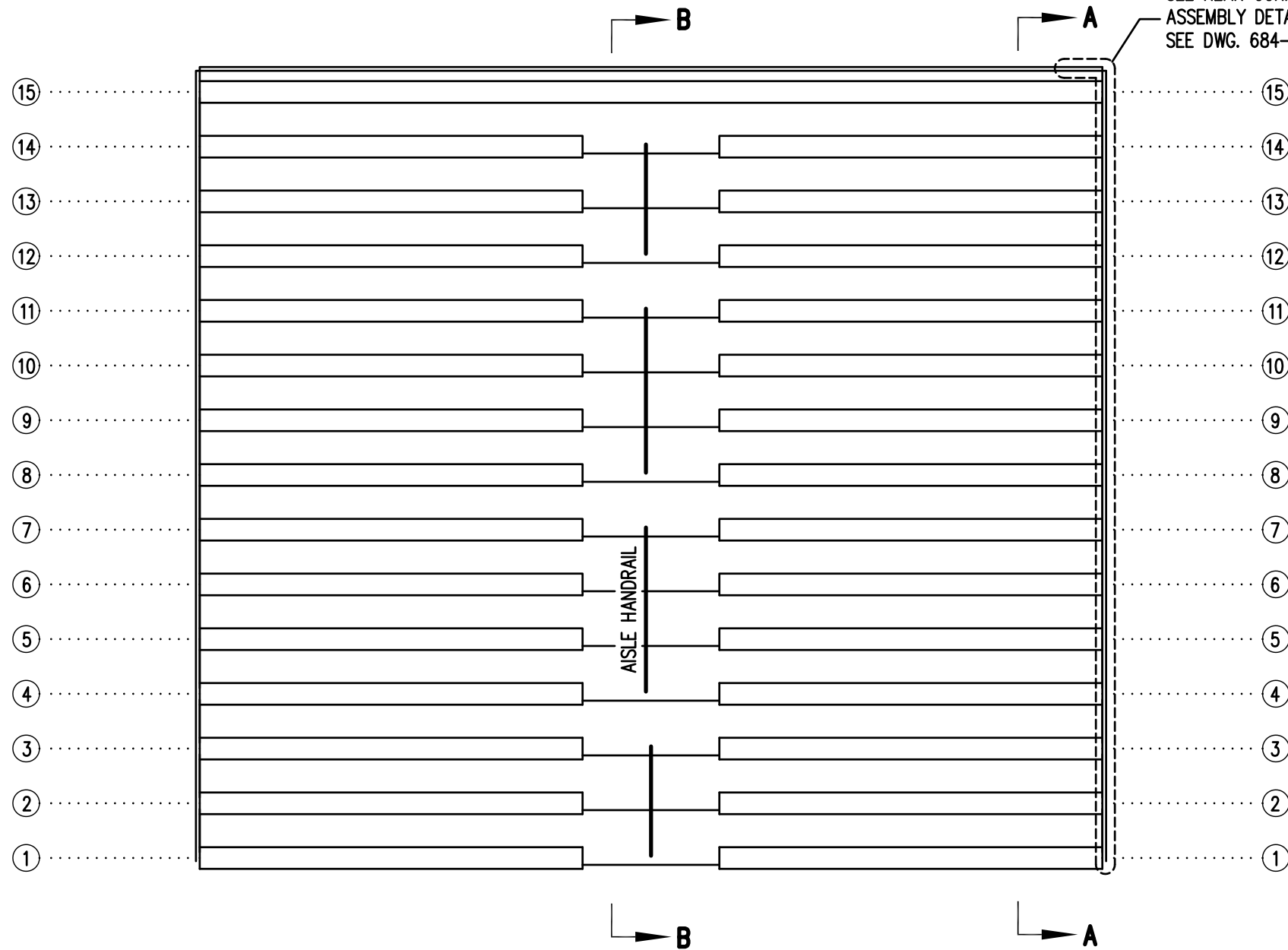


SECTION BB


3/8" = 1'-0"

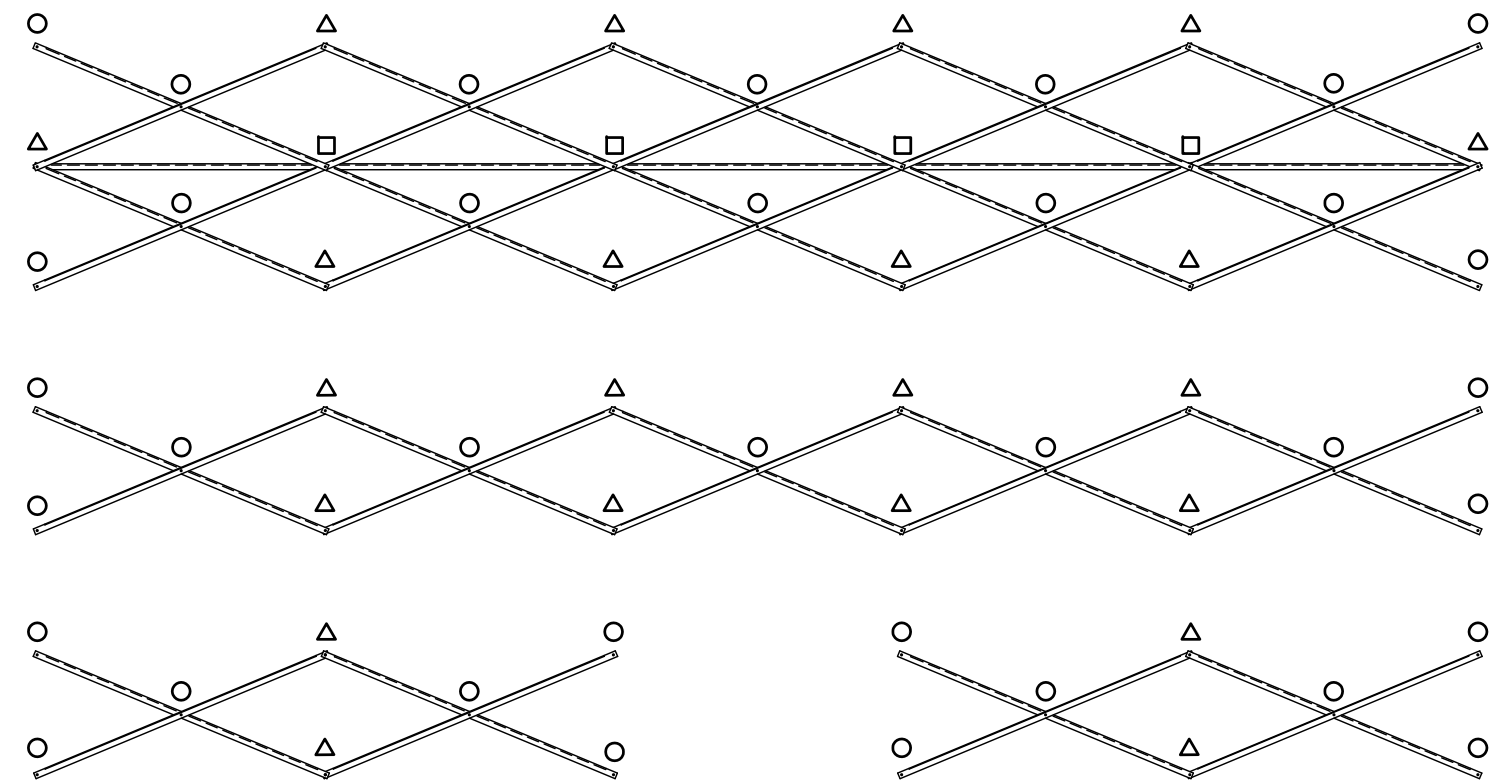
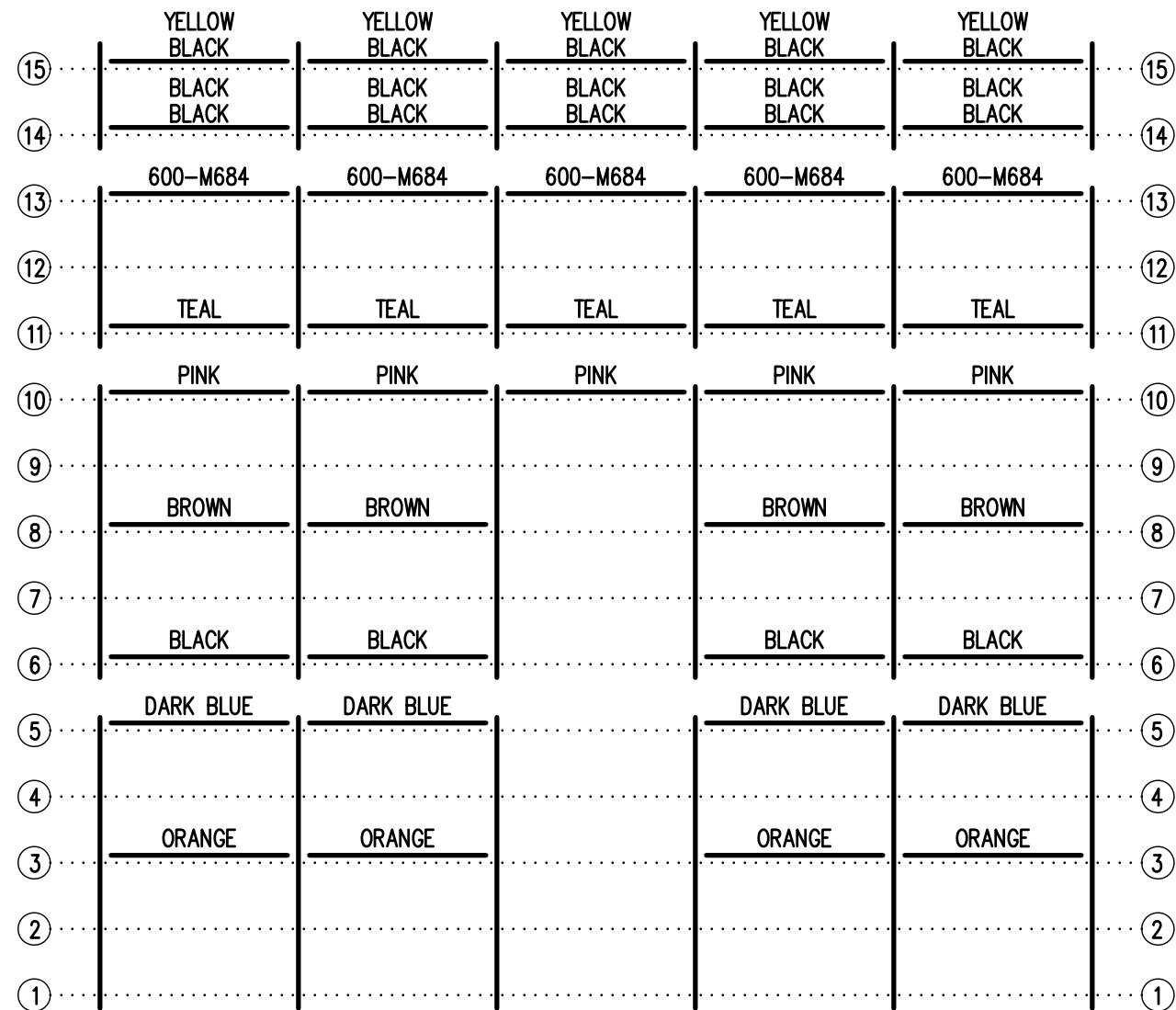
| | | | |
|---|----------|--|--|
|  | | Outdoor Aluminum P.O. BOX 118 GENEVA, ALABAMA 36340 334-684-2296 | |
| | | | |
| DATE | 04/06/09 | REVISIONS | |
| DR'N | WJW CKD | BY | |
| AP'VD | | DATE | |
| TITLE | | NO. | |
| DLW 15 ROW AISLE SECTION | | 684-E2016 | |

SEE REAR CORNER TIE
ASSEMBLY DETAIL
SEE DWG. 684-E1990



SEATING PLAN
3/16" = 1'-0"
274 NET SEATS @ 18" PER SEAT

| | | | | |
|---|----------|--|-----------|---------------------|
|  | | Outdoor Aluminum P.O. BOX 118 GENEVA, ALABAMA 36340 334-684-2296 | | |
| | | | | SCALE 3/16" = 1'-0" |
| DATE | 04/06/09 | | | |
| DR'N | WJW CKD | | | |
| AP'VD | | | | |
| TITLE | | | NO. | |
| DLWA 15-33 SEATING PLAN W/AISLE | | | 684-E2288 | |



X-BRACE DETAIL


N.T.S.

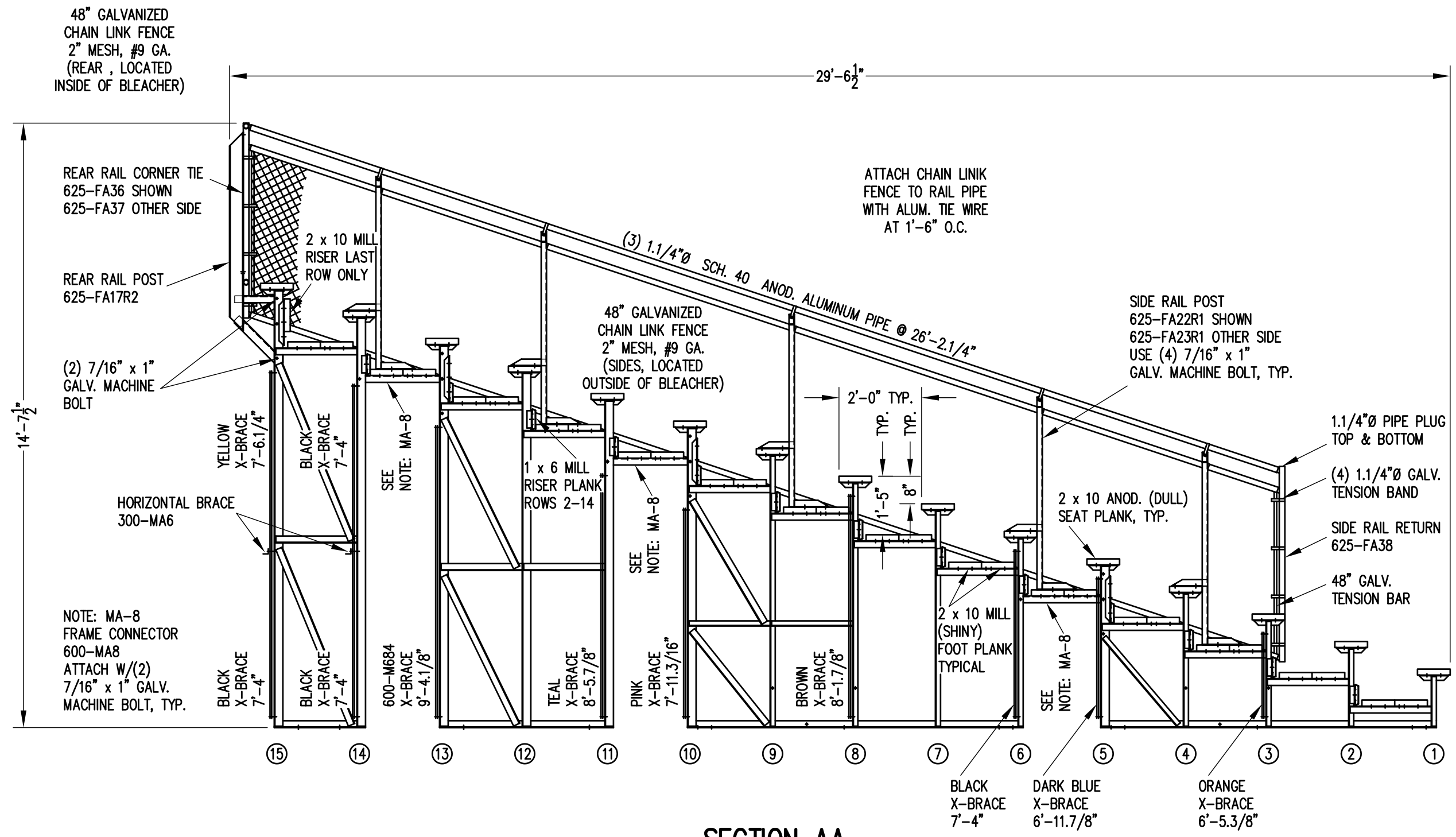
- 7/16" X 1" GALV. MACH. BOLT
- △ 7/16" X 1.1/2" GALV. MACH. BOLT
- 7/16" X 3" GALV. MACH. BOLT



FRAMING PLAN

3/16" = 1'-0"

| | | | |
|---|-----|--|---------------|
|  | | Outdoor Aluminum P.O. BOX 118 GENEVA, ALABAMA 36340 334-684-2296 | |
| | | | |
| DATE 04/06/09 | | | |
| DR'N W-W | CKD | | |
| AP'VD | | | |
| TITLE DLWA 15-33 FRAMING PLAN W/AISLE | | | NO. 684-E2289 |



48" GALVANIZED
CHAIN LINK FENCE
2" MESH, #9 GA.
(REAR, LOCATED
INSIDE OF BLEACHER)

29'-6 1/2"

REAR RAIL CORNER TIE
625-FA36 SHOWN
625-FA37 OTHER SIDE

REAR RAIL POST
625-FA17R2

(2) 7/16" x 1"
GALV. MACHINE
BOLT

2 x 10 MILL
RISER LAST
ROW ONLY

ATTACH CHAIN LINK
FENCE TO RAIL PIPE
WITH ALUM. TIE WIRE
AT 1'-6" O.C.

(3) 1.1/4" SCH. 40 ANOD. ALUMINUM PIPE @ 26'-2 1/4"

48" GALVANIZED
CHAIN LINK FENCE
2" MESH, #9 GA.
(SIDES, LOCATED
OUTSIDE OF BLEACHER)

SIDE RAIL POST
625-FA22R1 SHOWN
625-FA23R1 OTHER SIDE
USE (4) 7/16" x 1"
GALV. MACHINE BOLT, TYP.

14'-7 1/2"

YELLOW
X-BRACE
7'-6.1/4"

BLACK
X-BRACE
7'-4"

SEE
NOTE: MA-8

1 x 6 MILL
RISER PLANK
ROWS 2-14

SEE
NOTE: MA-8

PINK
X-BRACE
7'-11.3/16"

BROWN
X-BRACE
8'-1.7/8"

2 x 10 MILL
(SHINY)
FOOT PLANK
TYPICAL

SEE
NOTE: MA-8

1.1/4" PIPE PLUG
TOP & BOTTOM

(4) 1.1/4" GALV.
TENSION BAND

SIDE RAIL RETURN
625-FA38

48" GALV.
TENSION BAR

HORIZONTAL BRACE
300-MA6

NOTE: MA-8
FRAME CONNECTOR
600-MA8
ATTACH W/(2)
7/16" x 1" GALV.
MACHINE BOLT, TYP.

BLACK
X-BRACE
7'-4"

BLACK
X-BRACE
7'-4"

600-M684
X-BRACE
9'-4.1/8"

TEAL
X-BRACE
8'-5.7/8"

SEE
NOTE: MA-8

PINK
X-BRACE
7'-11.3/16"

BROWN
X-BRACE
8'-1.7/8"

BLACK
X-BRACE
7'-4"

DARK BLUE
X-BRACE
6'-11.7/8"

ORANGE
X-BRACE
6'-5.3/8"

SECTION AA

3/8" = 1'-0"

| | | | |
|-------------------------------------|--|---|-----------|
| | | P.O. BOX 118 GENEVA, ALABAMA 36340 334-684-2296 | |
| | | SCALE 3/8"=1'-0" | REVISIONS |
| DATE 04/06/09 | | | |
| DR'N W-W CKD | | | |
| AP'VD | | | |
| TITLE | | NO. | |
| DLW 15 ROW SECTION DOUBLE FOOTBOARD | | 684-E2293 | |