

BOLT CLIP DETAIL

1.1/2" = 1'-0"



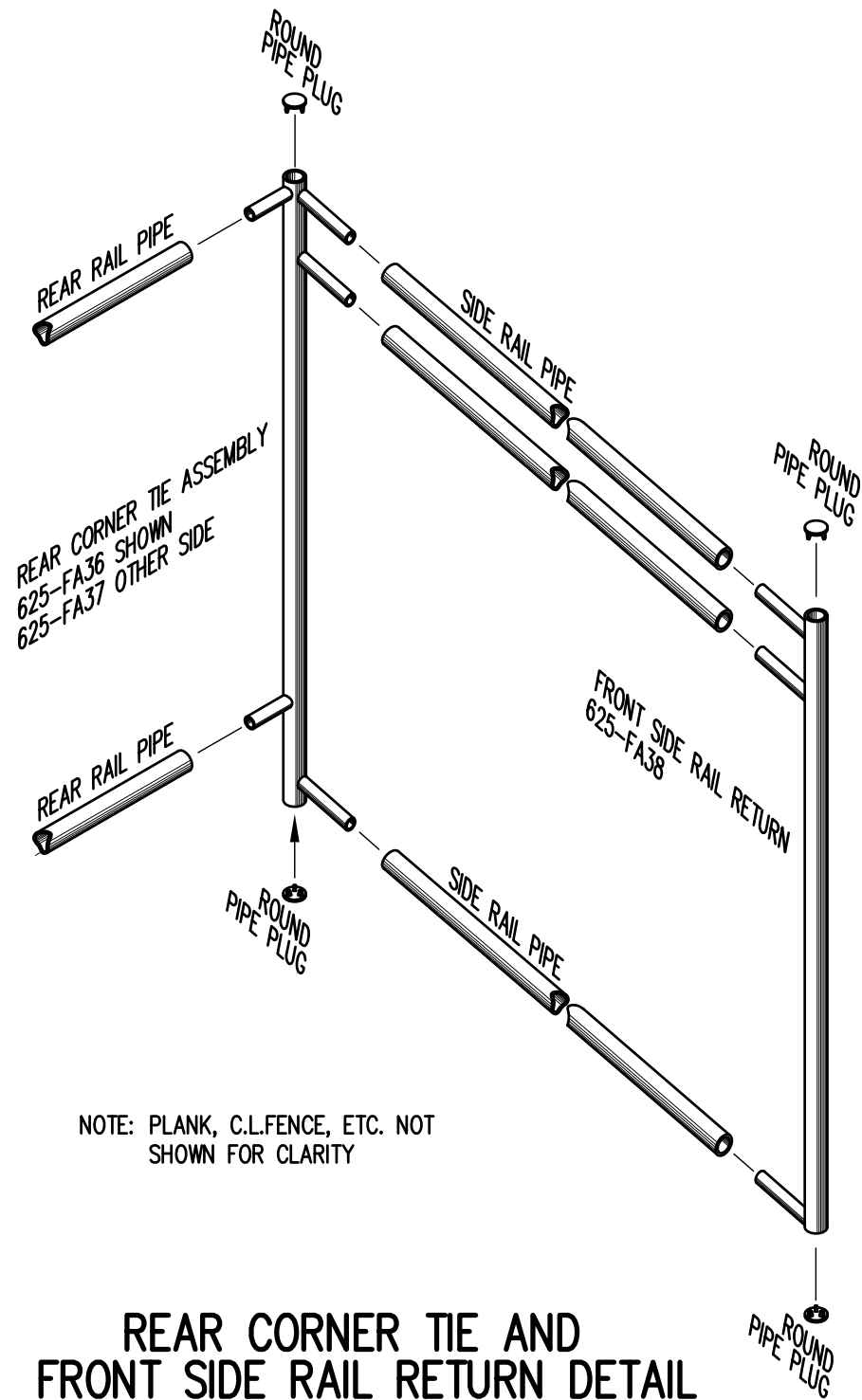
FIG.1

FIG.2

- 1) LOCATE THE CHANNEL END CAP AS SHOWN IN FIG. 1.
- 2) TAP END CAP INTO PLACE WITH RUBBER Mallet OR SOFT WOOD. FIG.2
- 3) DRILL TWO 5/32" HOLES THROUGH THE BOTTOM FLANGE AND THE BOTTOM OUTSIDE PLANK FLANGES. INSTALL TWO 3/16" x 1/4" RIVETS. (2 PER PLANK)

END CAP DETAIL

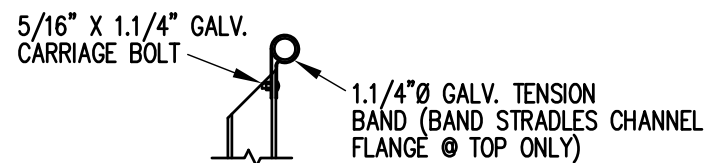
N.T.S.



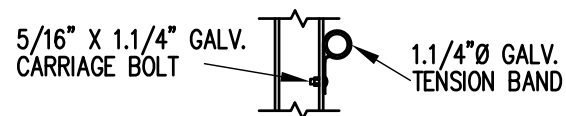
NOTE: PLANK, C.L.FENCE, ETC. NOT SHOWN FOR CLARITY

REAR CORNER TIE AND FRONT SIDE RAIL RETURN DETAIL

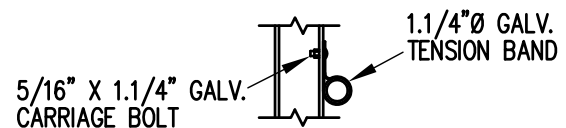
3/4" = 1'-0"



TOP RAIL

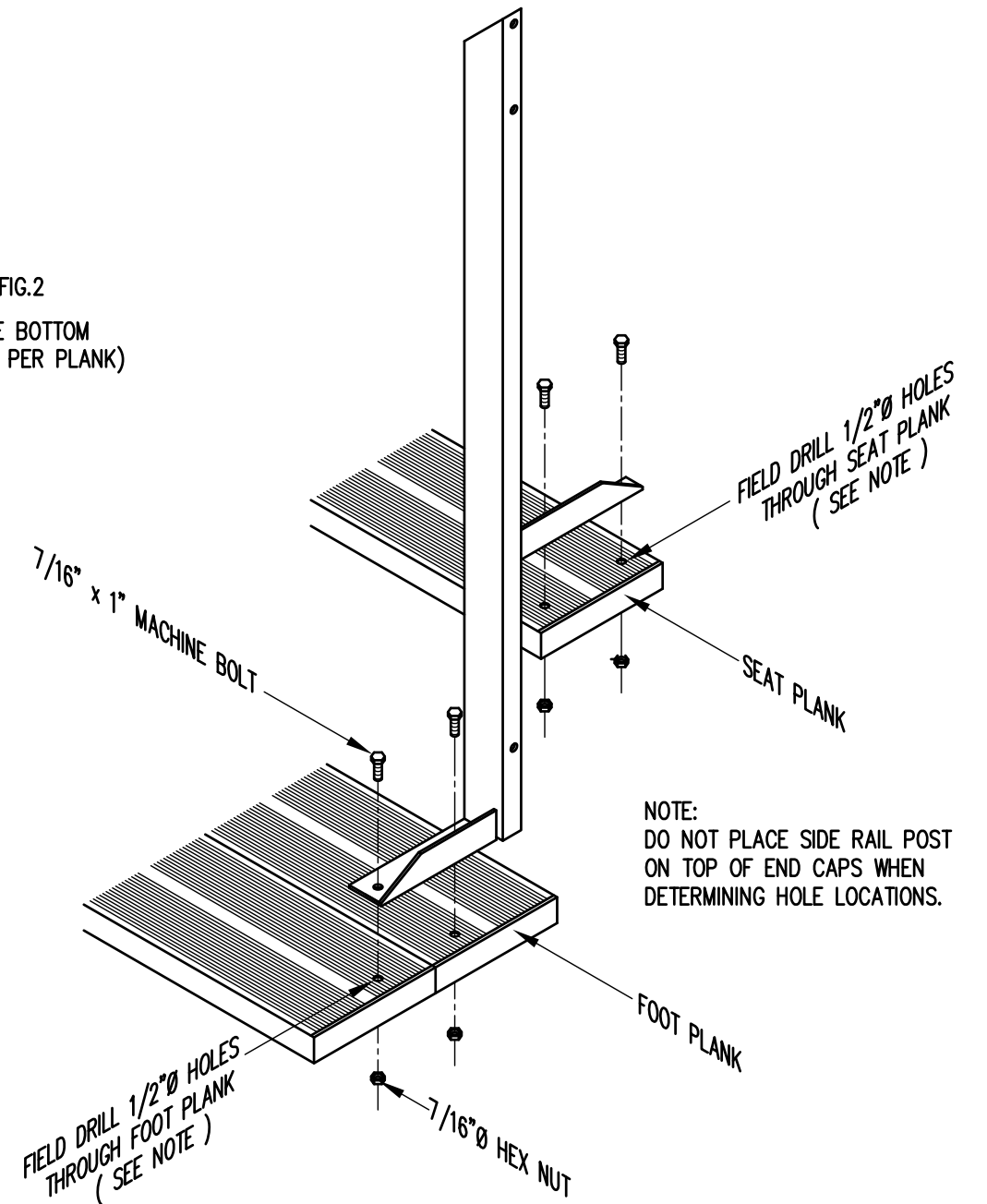


MID RAIL



LOWER RAIL

3/4" = 1'-0"

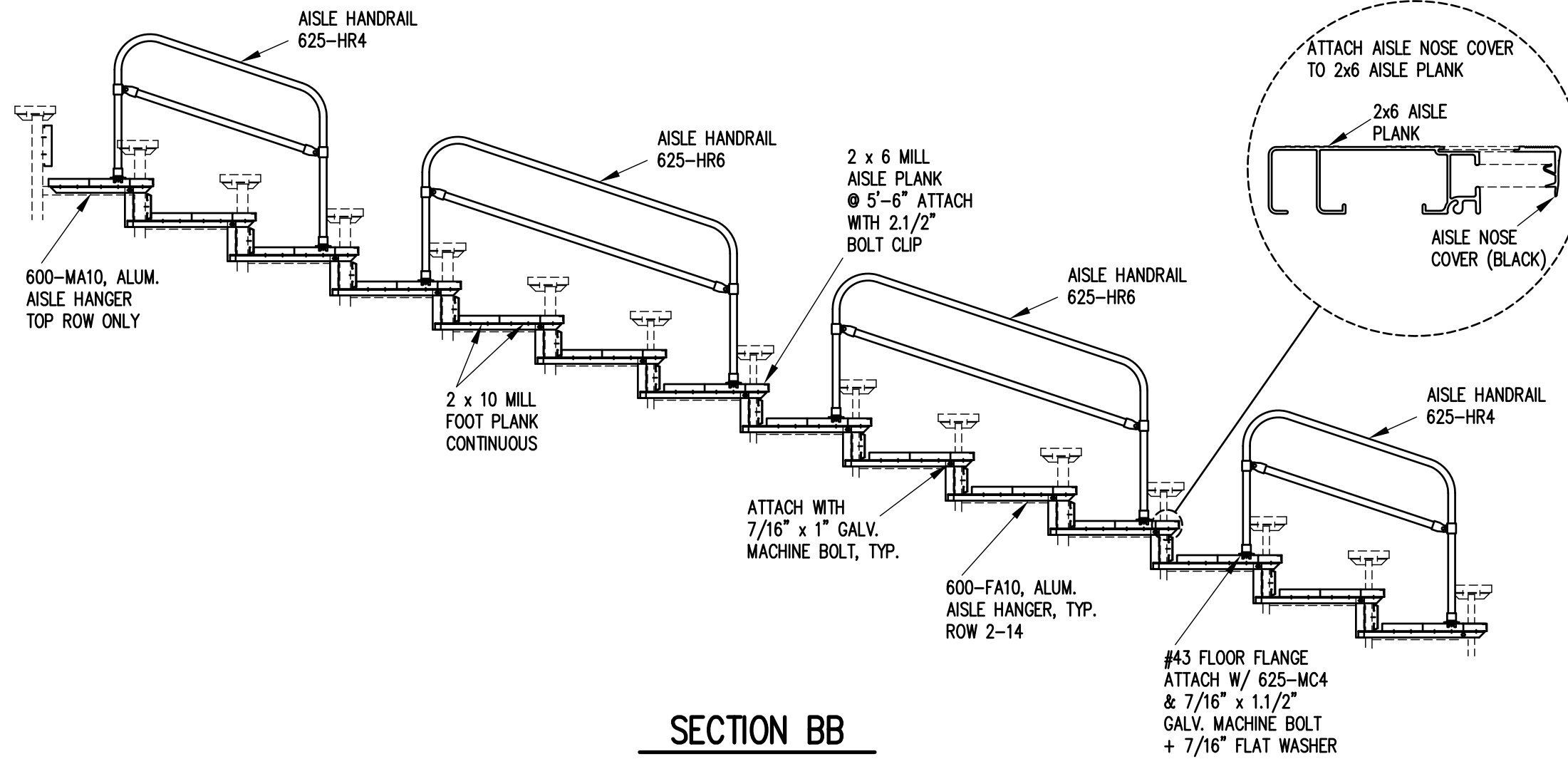


NOTE: DO NOT PLACE SIDE RAIL POST ON TOP OF END CAPS WHEN DETERMINING HOLE LOCATIONS.

TYP. SIDE RAIL POST ATTACHMENT


1" = 1'-0"

		P.O. BOX 118 GENEVA, ALABAMA 36340 334-684-2296			
		SCALE AS NOTED	REVISIONS	BY	DATE
DATE	11/2/00	SIDE GUARDRAIL TO OUTSIDE		WHW	03/02
DR'N	SS	CKD			
AP'VD					
TITLE				NO.	
TYPICAL DETAILS				684-E1990	

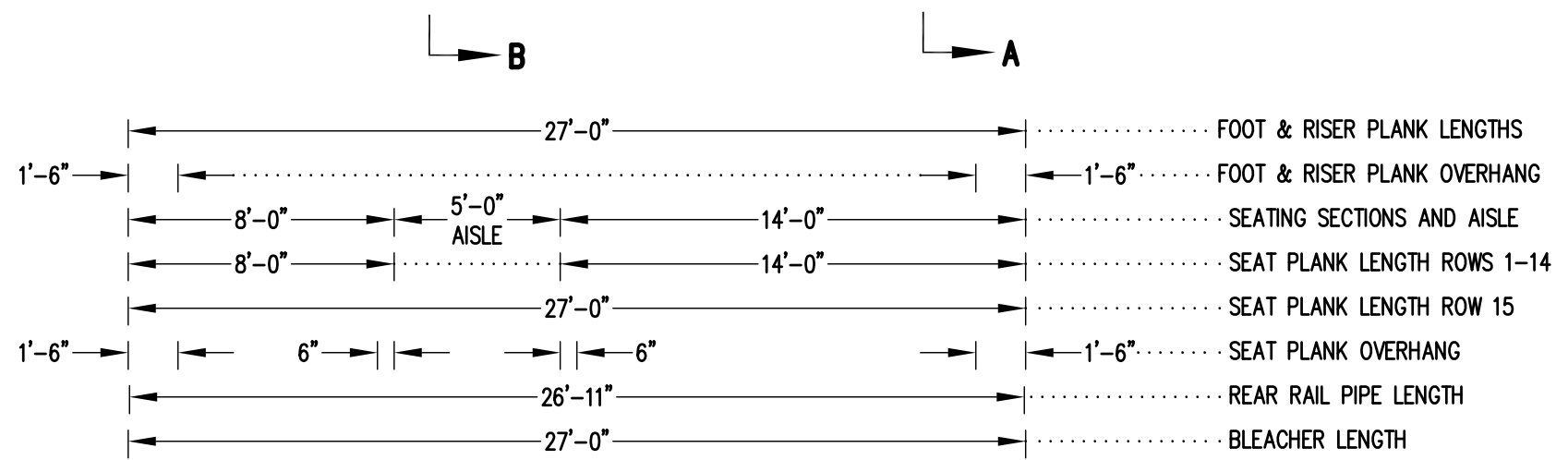
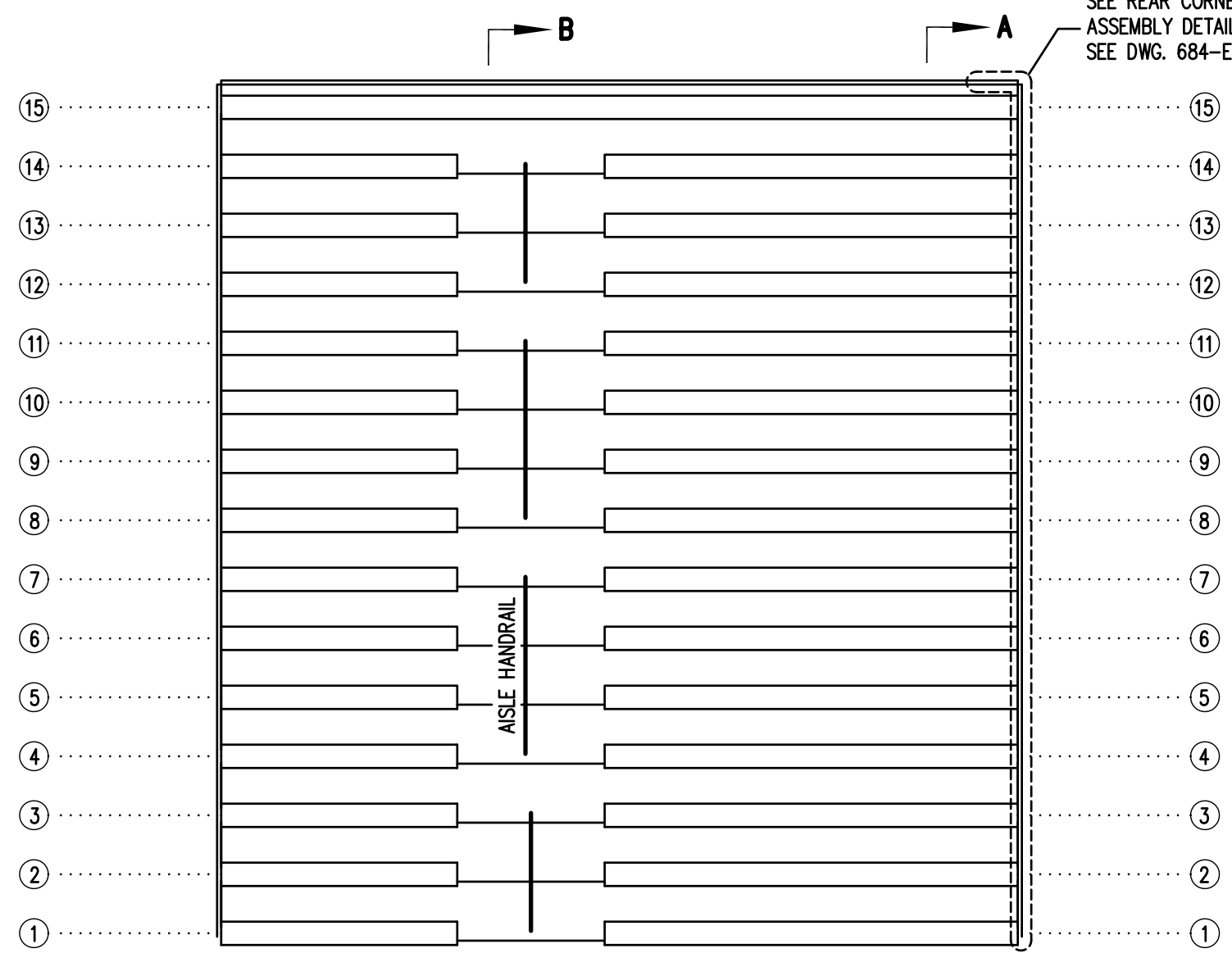


SECTION BB


3/8" = 1'-0"

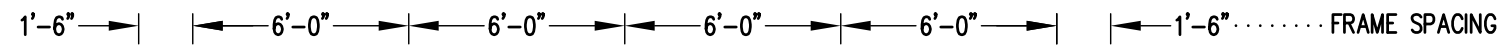
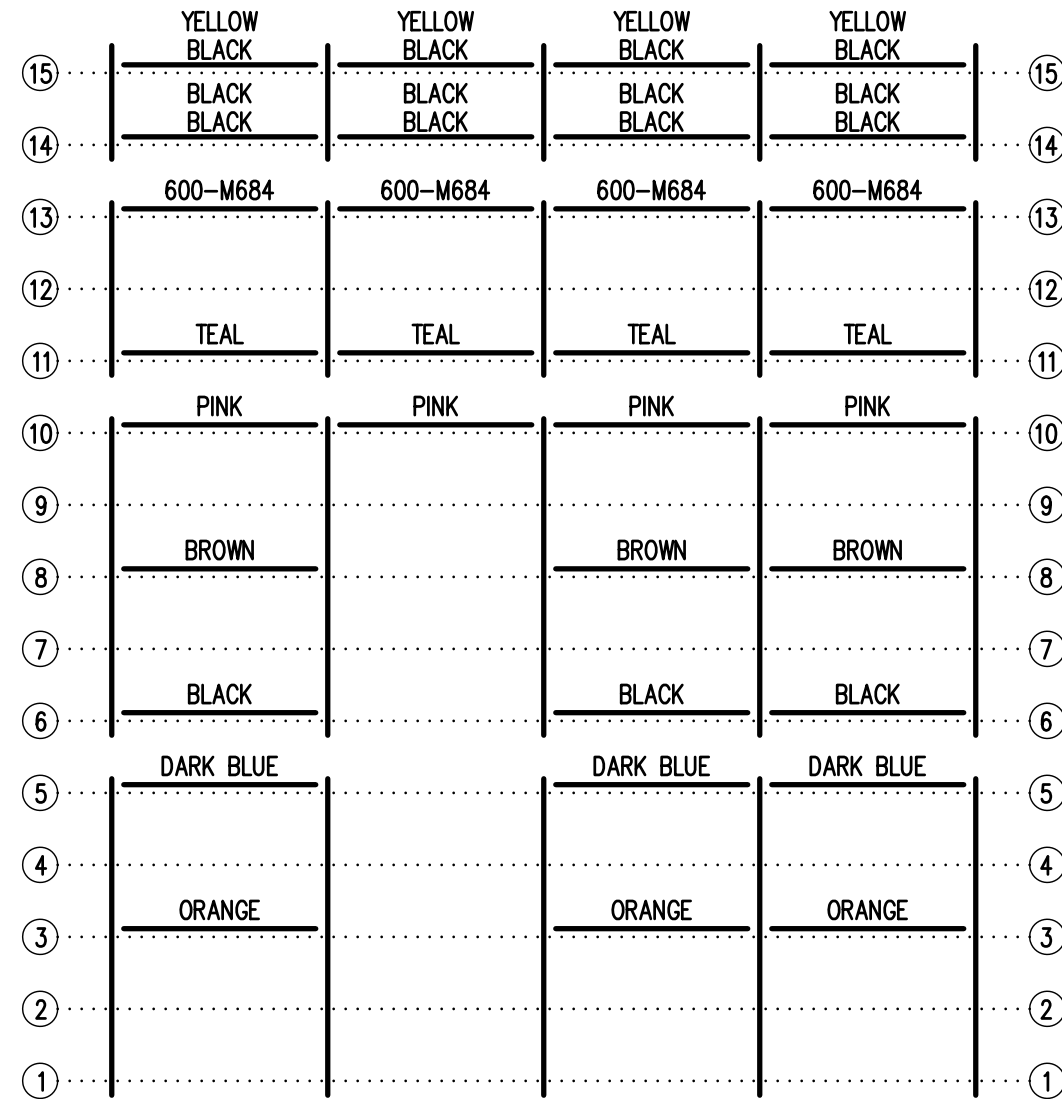
		Outdoor Aluminum		P.O. BOX 118 GENEVA, ALABAMA 36340 334-684-2296	
SCALE	3/8"=1'-0"	REVISIONS	BY	DATE	
DATE	04/06/09				
DR'N	WJW CKD				
AP'VD					
TITLE	DLW 15 ROW AISLE SECTION				NO. 684-E2016

SEE REAR CORNER TIE
ASSEMBLY DETAIL
SEE DWG. 684-E1990

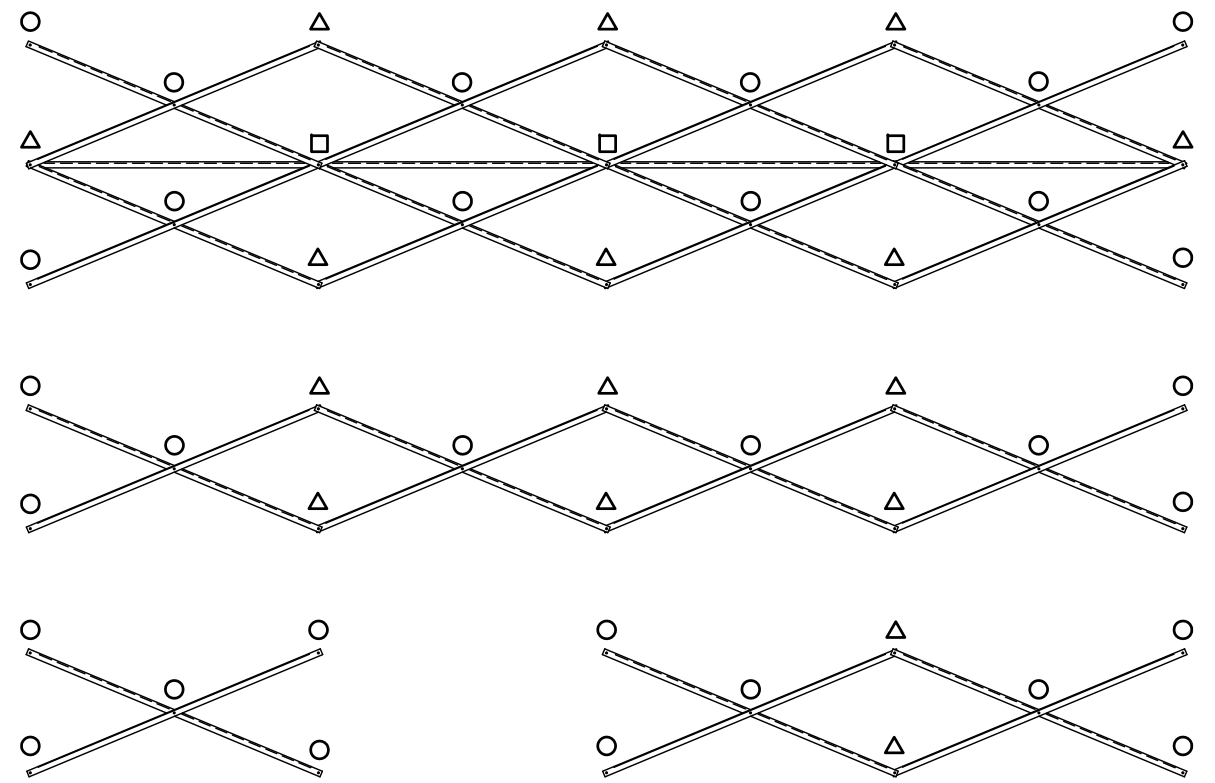


SEATING PLAN
3/16" = 1'-0"
214 NET SEATS @ 18" PER SEAT

		Outdoor Aluminum P.O. BOX 118 GENEVA, ALABAMA 36340 334-684-2296		
				SCALE
DATE	04/06/09			
DR'N	WJW CKD			
AP'VD				
TITLE			NO.	
DLWA 15-27 SEATING PLAN W/AISLE			684-E2283	



FRAMING PLAN
3/16" = 1'-0"

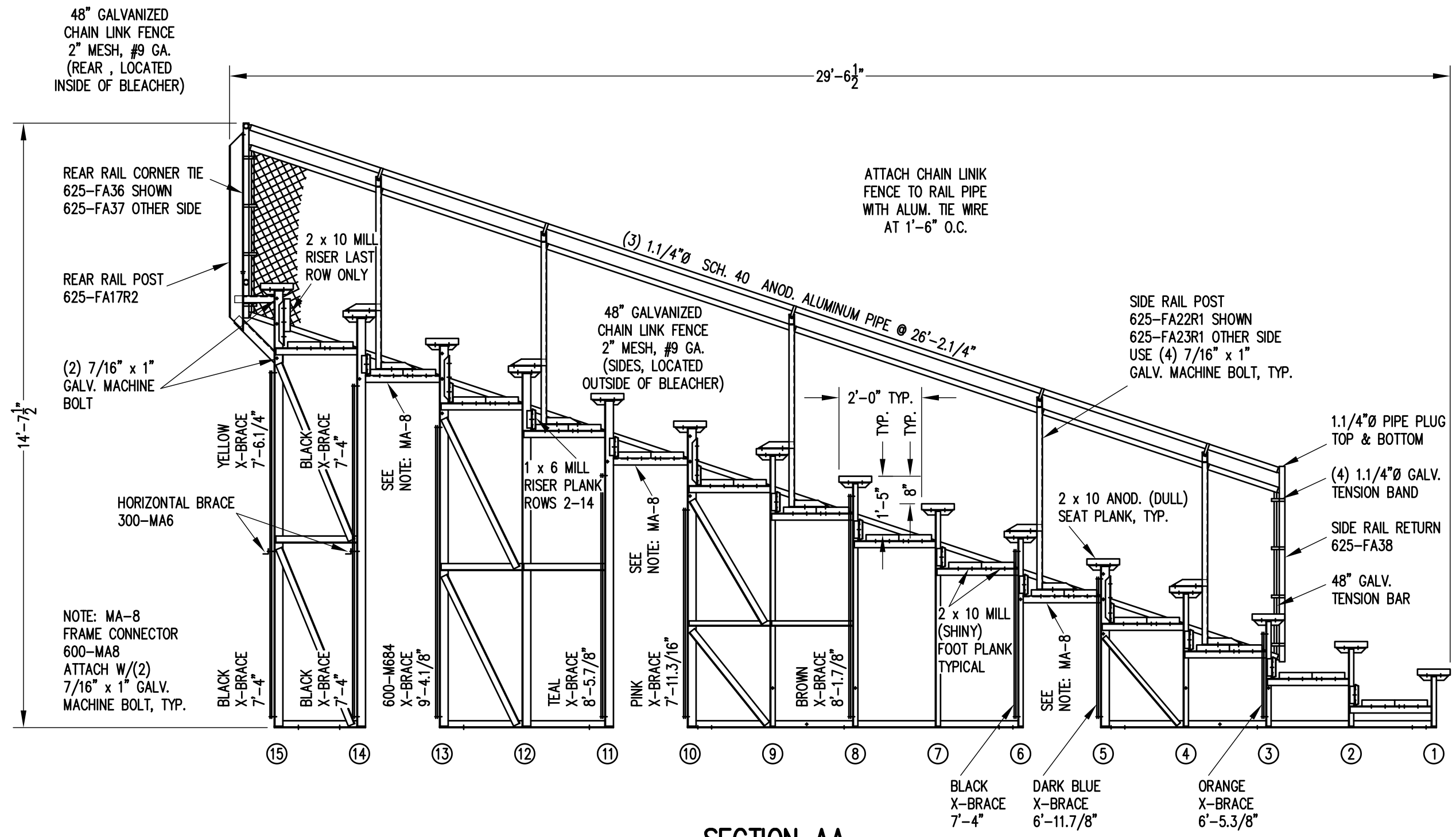


X-BRACE DETAIL

N.T.S.


- 7/16" X 1" GALV. MACH. BOLT
- △ 7/16" X 1.1/2" GALV. MACH. BOLT
- 7/16" X 3" GALV. MACH. BOLT

		P.O. BOX 118 GENEVA, ALABAMA 36340 334-684-2296	
		SCALE 3/16"=1'-0"	REVISIONS
DATE 04/06/09			
DR'N W-W	CKD		
AP'VD			
TITLE DLWA 15-27 FRAMING PLAN W/AISLE			NO. 684-E2284



SECTION AA

3/8" = 1'-0"

		P.O. BOX 118 GENEVA, ALABAMA 36340 334-684-2296		
SCALE	3/8"=1'-0"	REVISIONS	BY	DATE
DATE	04/06/09			
DR'N	WJW CKD			
AP'VD				
TITLE	DLW 15 ROW SECTION DOUBLE FOOTBOARD		NO.	684-E2293