

BOLT CLIP DETAIL

1.1/2" = 1'-0"



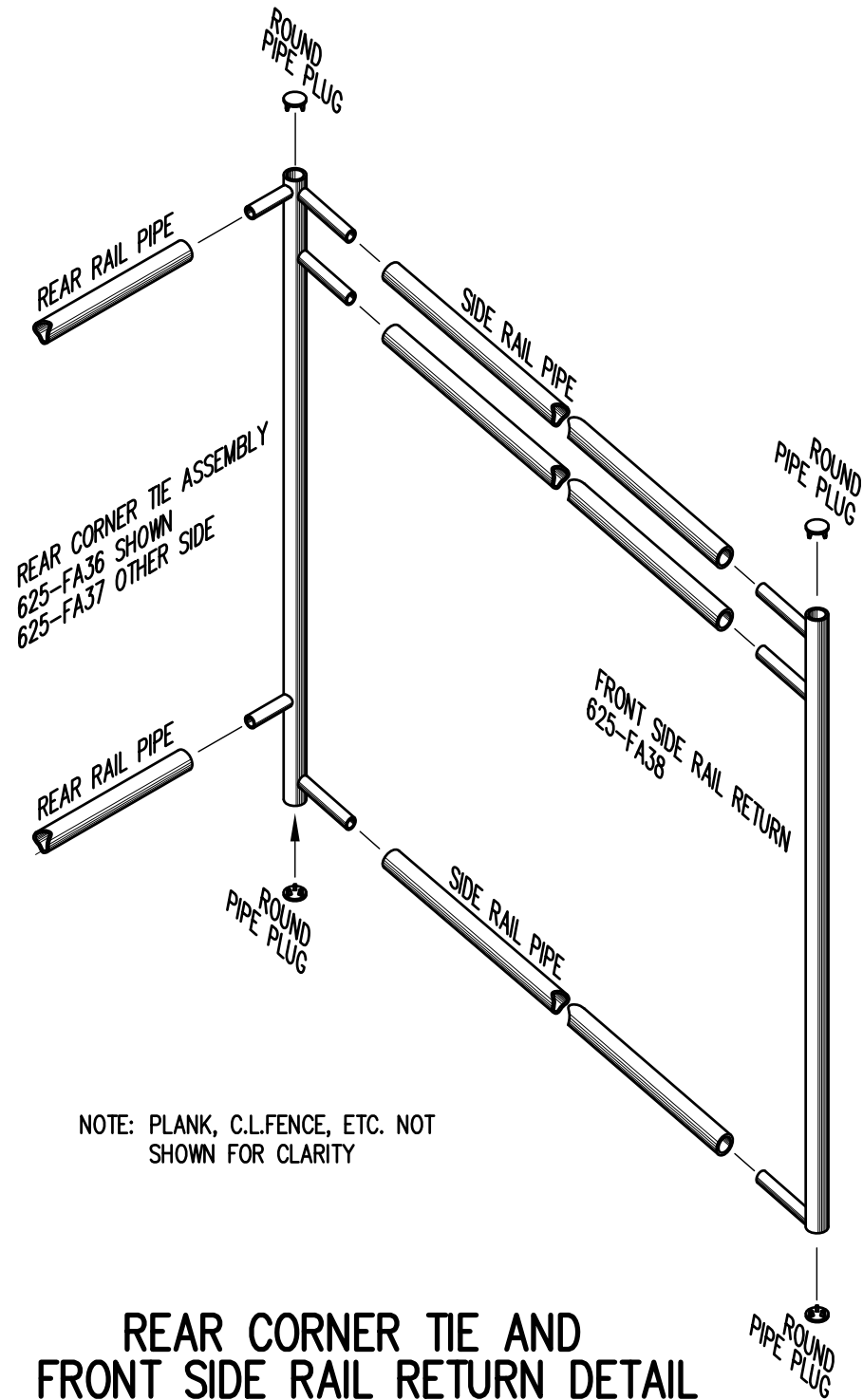
FIG.1

FIG.2

- 1) LOCATE THE CHANNEL END CAP AS SHOWN IN FIG. 1.
- 2) TAP END CAP INTO PLACE WITH RUBBER Mallet OR SOFT WOOD. FIG.2
- 3) DRILL TWO 5/32" HOLES THROUGH THE BOTTOM FLANGE AND THE BOTTOM OUTSIDE PLANK FLANGES. INSTALL TWO 3/16" x 1/4" RIVETS. (2 PER PLANK)

END CAP DETAIL

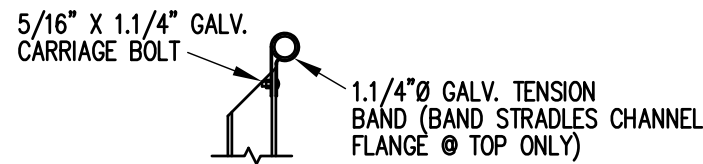
N.T.S.



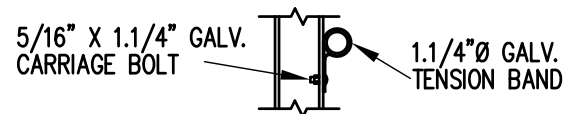
NOTE: PLANK, C.L.FENCE, ETC. NOT SHOWN FOR CLARITY

REAR CORNER TIE AND FRONT SIDE RAIL RETURN DETAIL

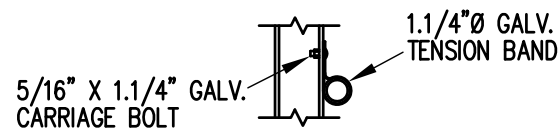
3/4" = 1'-0"



TOP RAIL

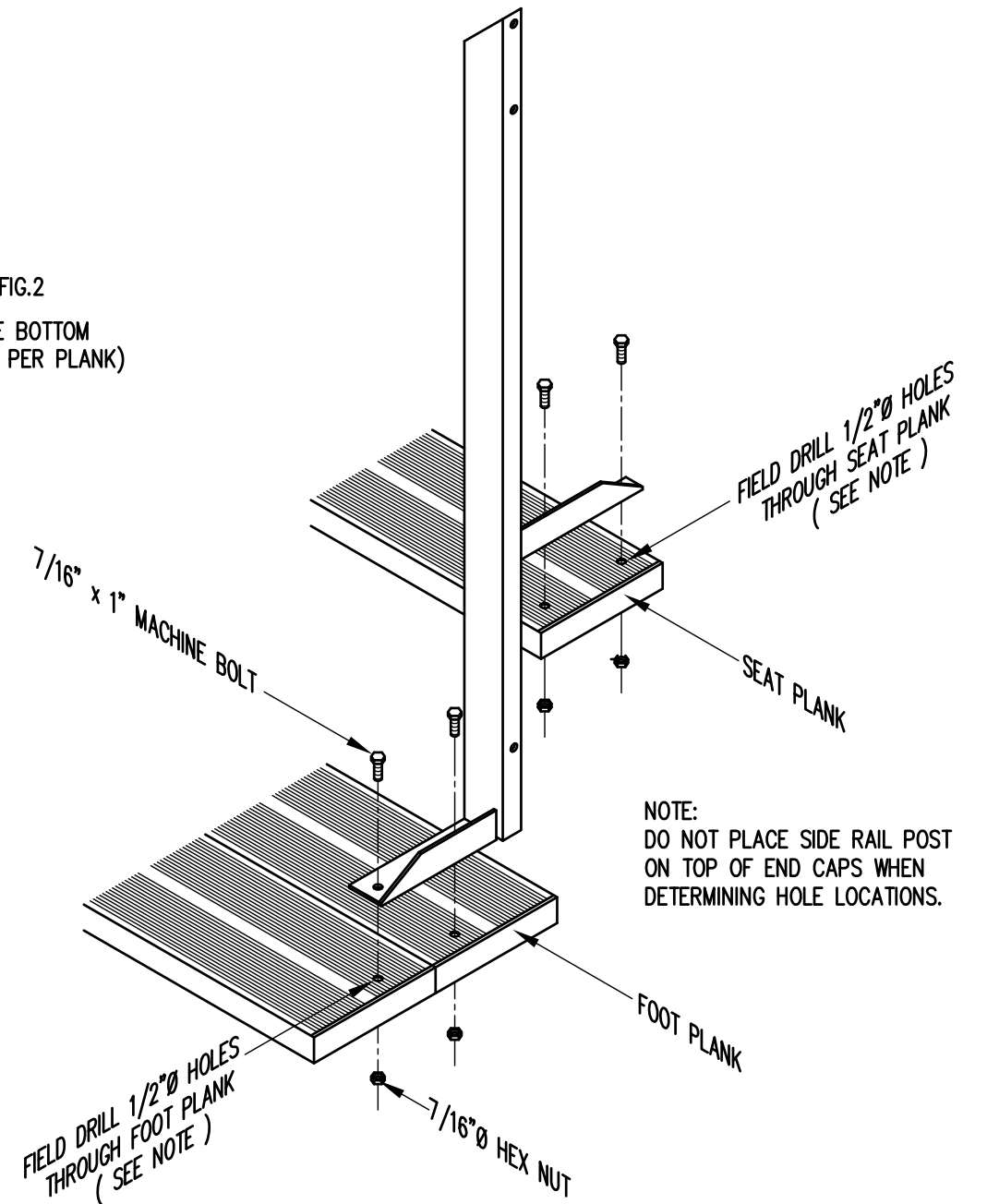


MID RAIL



LOWER RAIL

3/4" = 1'-0"

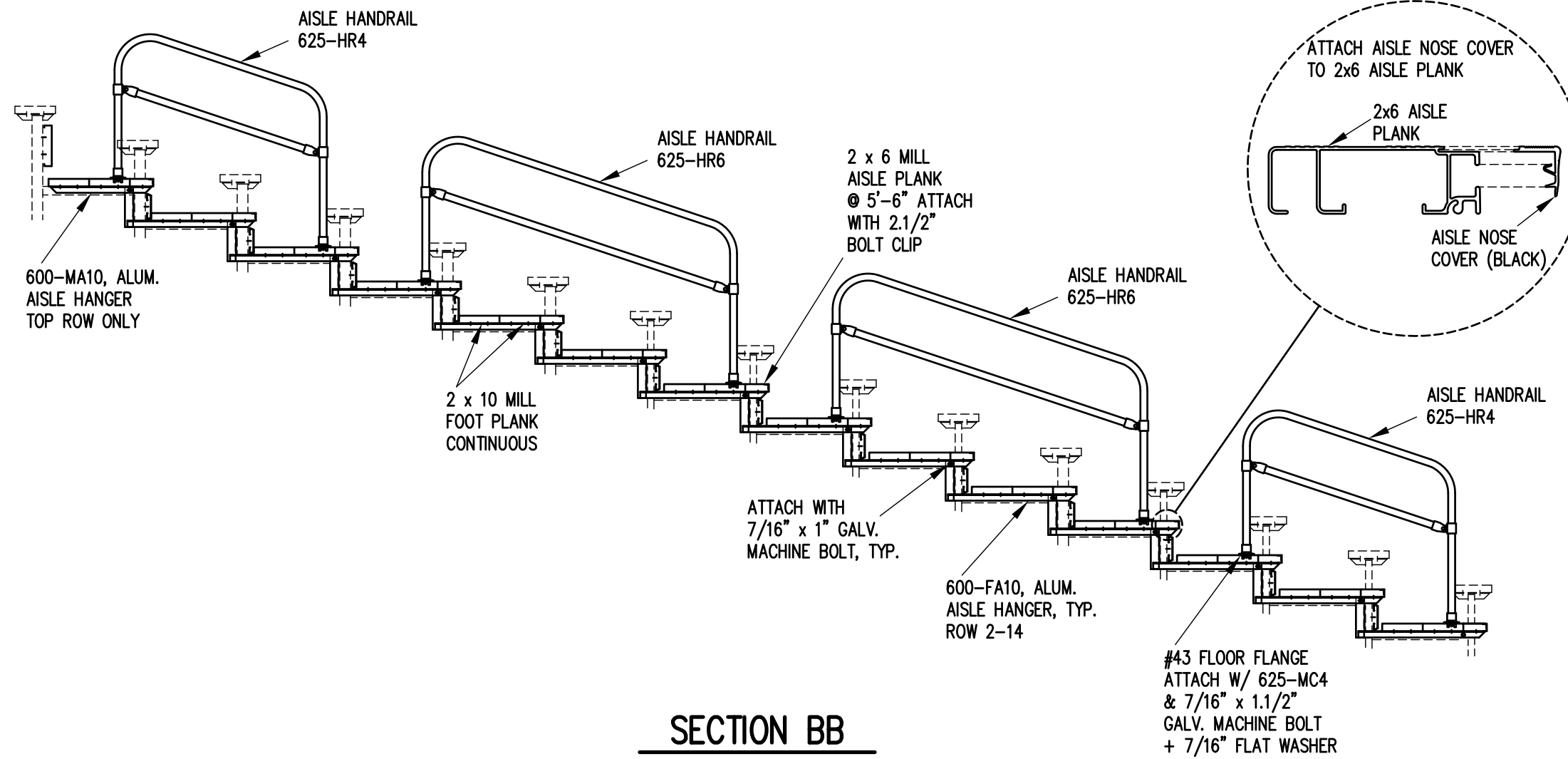


NOTE: DO NOT PLACE SIDE RAIL POST ON TOP OF END CAPS WHEN DETERMINING HOLE LOCATIONS.

TYP. SIDE RAIL POST ATTACHMENT


1" = 1'-0"

		Outdoor Aluminum P.O. BOX 118 GENEVA, ALABAMA 36340 334-684-2296			
				SCALE AS NOTED	REVISIONS
DATE	11/2/00	SIDE GUARDRAIL TO OUTSIDE		WHW	03/02
DR'N	SS	CKD			
AP'VD					
TITLE				NO.	
TYPICAL DETAILS				684-E1990	

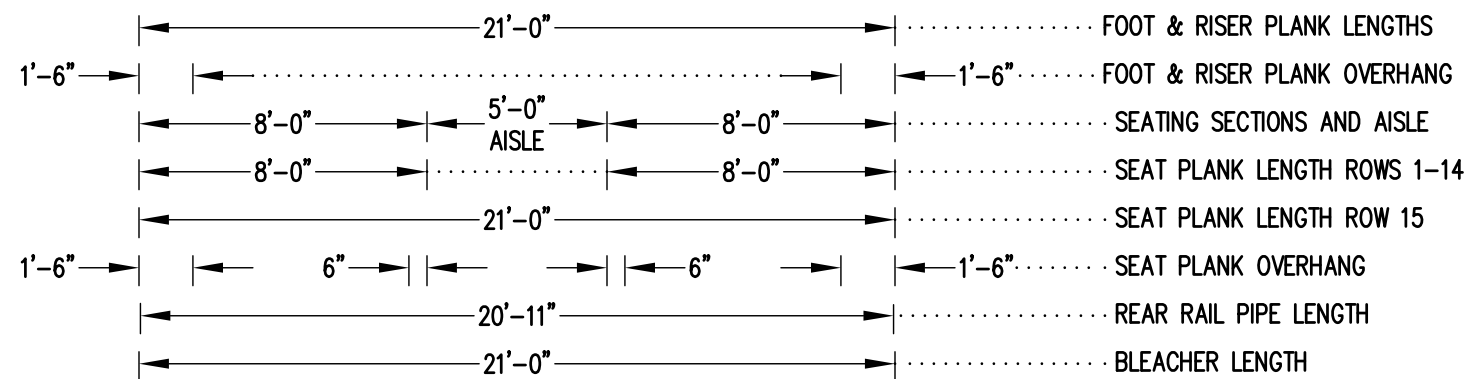
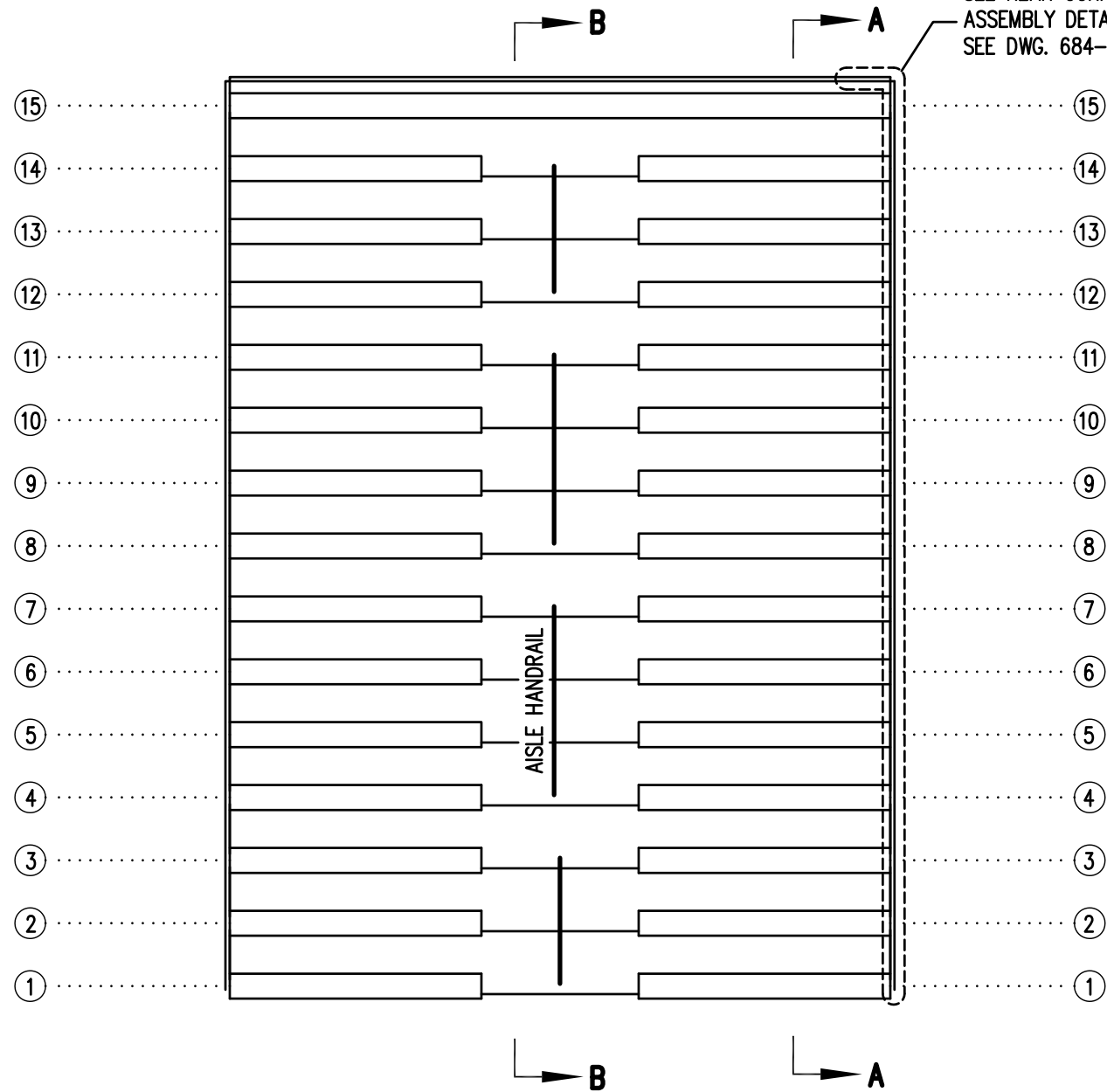


SECTION BB


3/8" = 1'-0"

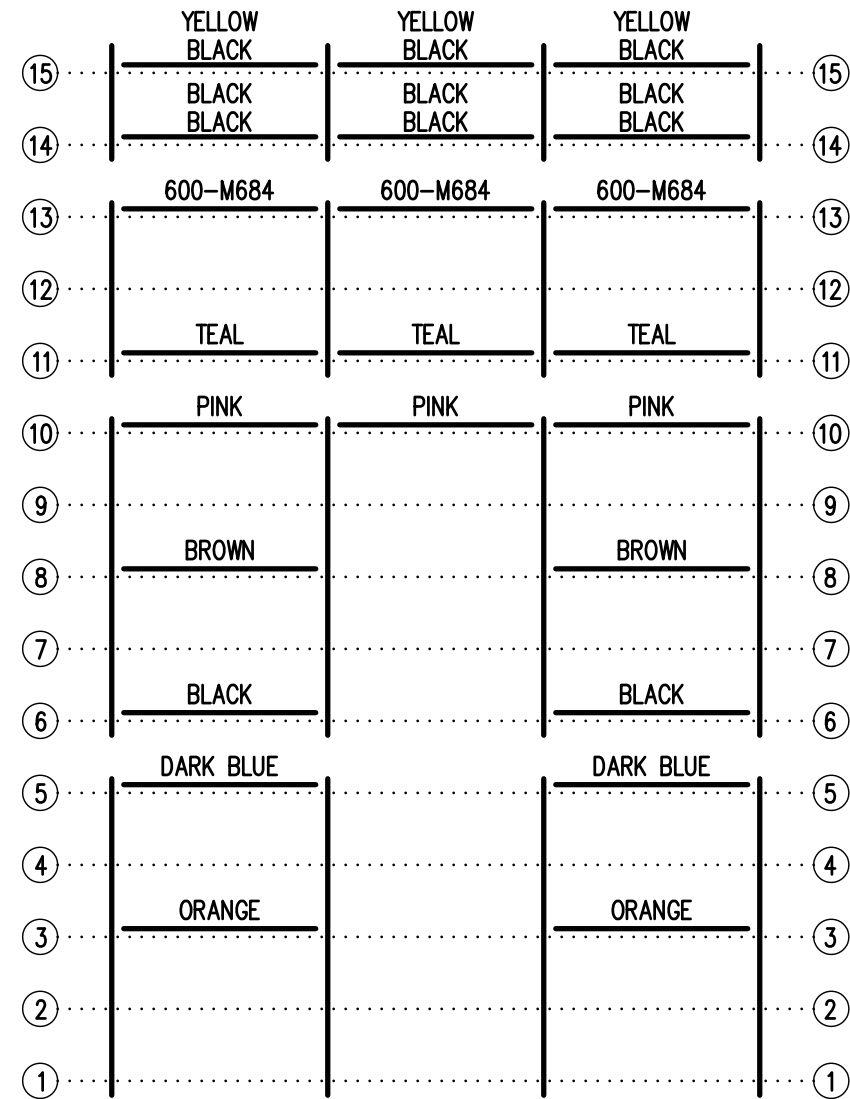
		Outdoor Aluminum		P.O. BOX 118 GENEVA, ALABAMA 36340 334-684-2296	
SCALE	3/8"=1'-0"	REVISIONS	BY	DATE	
DATE	04/06/09				
DR'N	WJW CKD				
AP'VD					
TITLE	DLW 15 ROW AISLE SECTION				NO. 684-E2016

SEE REAR CORNER TIE
ASSEMBLY DETAIL
SEE DWG. 684-E1990



SEATING PLAN
 3/16" = 1'-0"
 154 NET SEATS @ 18" PER SEAT

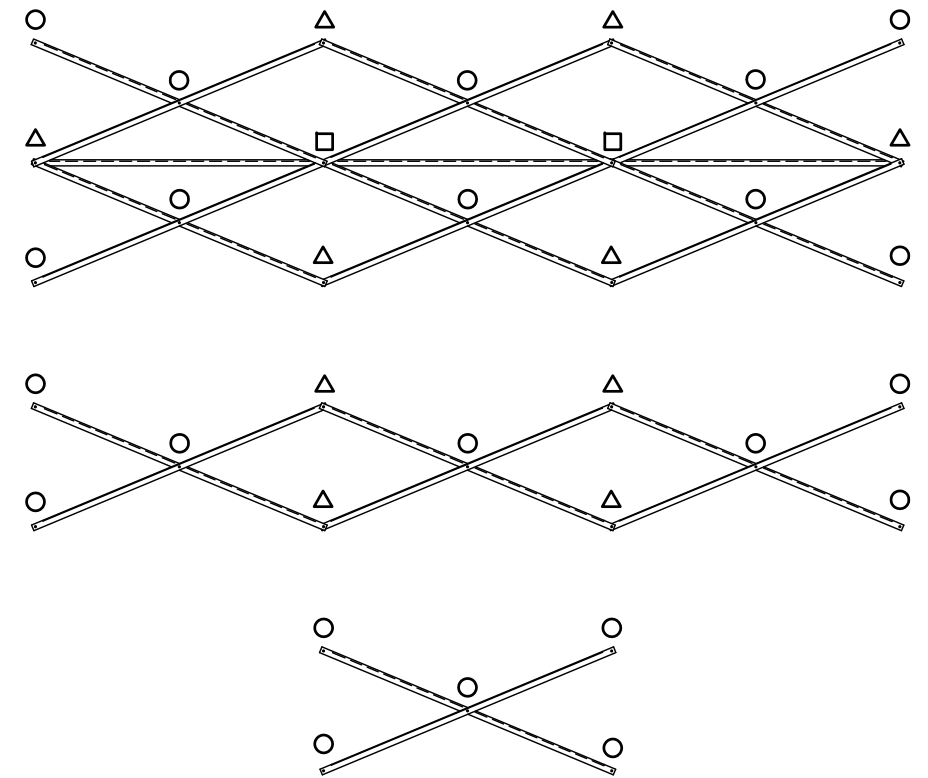
		Outdoor Aluminum <small>P.O. BOX 118 GENEVA, ALABAMA 36340 334-684-2296</small>		
				SCALE 3/16"=1'-0"
DATE	04/06/09			
DR'N	WJW CKD			
AP'VD				
TITLE			NO.	
DLWA 15-21 SEATING PLAN W/AISLE			684-E2278	



1'-6" → | ← 6'-0" → | ← 6'-0" → | ← 6'-0" → | ← 1'-6" FRAME SPACING

FRAMING PLAN


3/16" = 1'-0"

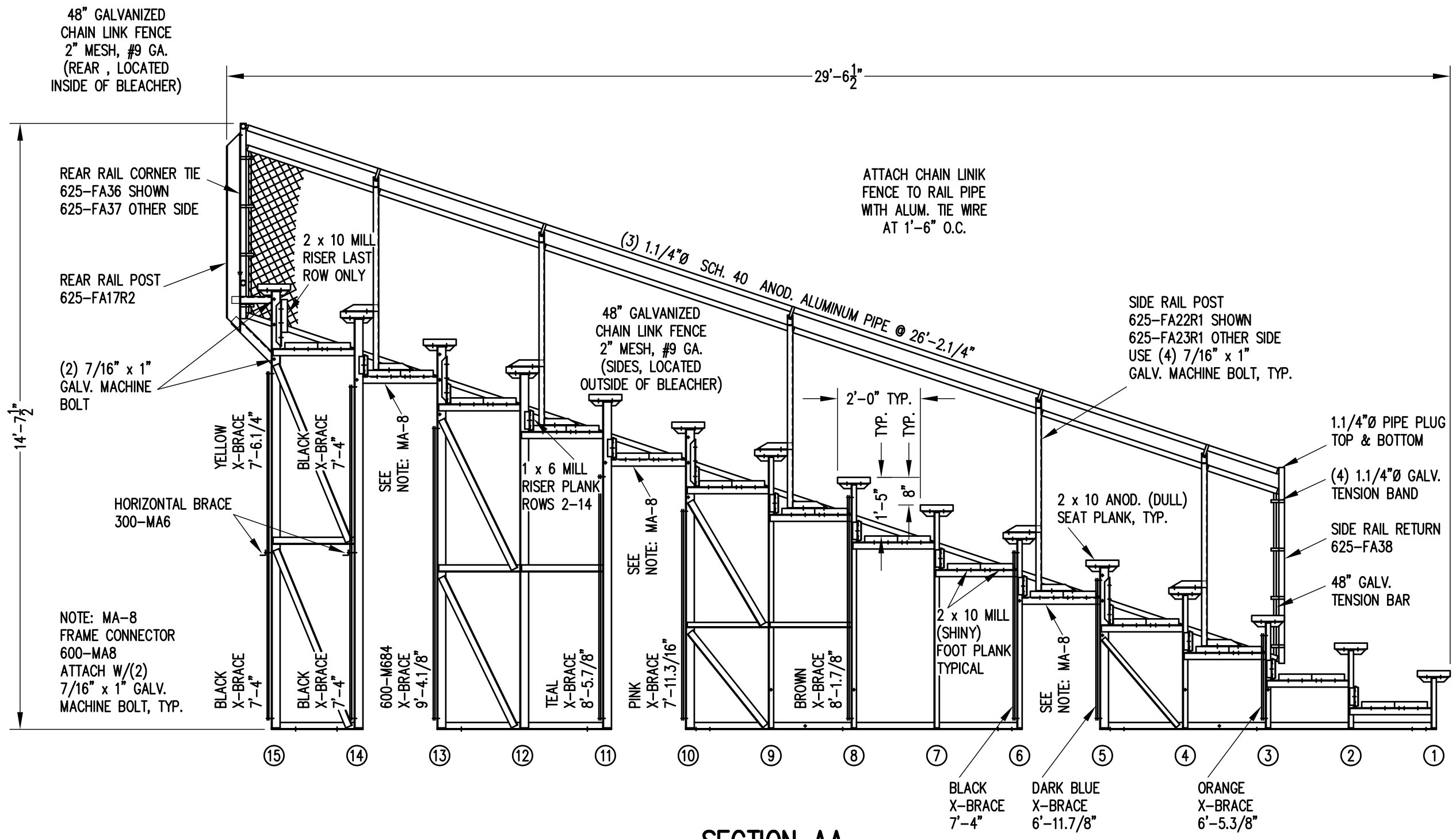


X-BRACE DETAIL

N.T.S.

- 7/16" X 1" GALV. MACH. BOLT
- △ 7/16" X 1.1/2" GALV. MACH. BOLT
- 7/16" X 3" GALV. MACH. BOLT

		Outdoor Aluminum		P.O. BOX 118 GENEVA, ALABAMA 36340 334-684-2296	
SCALE	3/16"=1'-0"	REVISIONS	BY	DATE	
DATE	04/06/09				
DR'N	W-W CKD				
AP'VD					
TITLE				NO.	
DLWA 15-21 FRAMING PLAN W/AISLE				684-E2279	



SECTION AA

3/8" = 1'-0"

		P.O. BOX 118 GENEVA, ALABAMA 36340 334-684-2296	
		SCALE 3/8"=1'-0"	REVISIONS
DATE 04/06/09			
DR'N W-1W	CKD		
AP'VD			
TITLE DLW 15 ROW SECTION DOUBLE FOOTBOARD			NO. 684-E2293