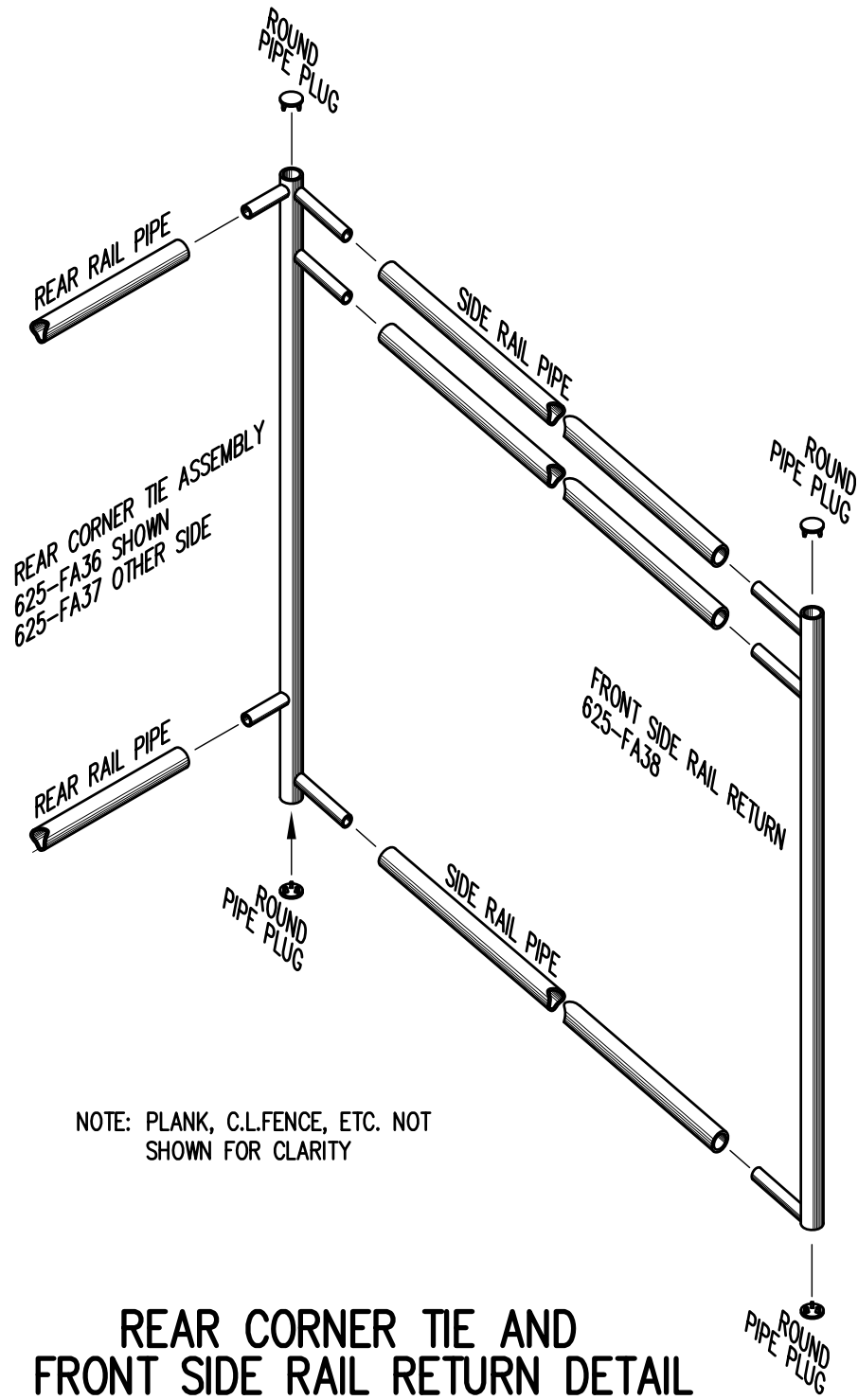


**BOLT CLIP DETAIL**

1.1/2" = 1'-0"



NOTE: PLANK, C.L.FENCE, ETC. NOT SHOWN FOR CLARITY

**REAR CORNER TIE AND FRONT SIDE RAIL RETURN DETAIL**

3/4" = 1'-0"



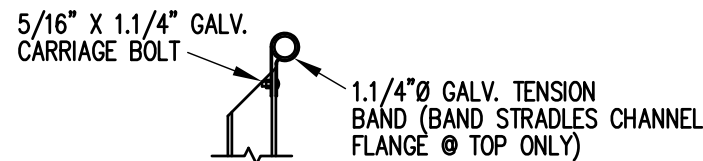
FIG.1

FIG.2

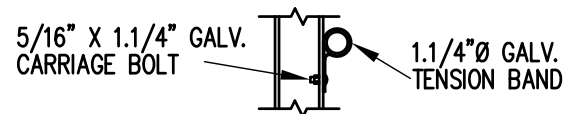
- 1) LOCATE THE CHANNEL END CAP AS SHOWN IN FIG. 1.
- 2) TAP END CAP INTO PLACE WITH RUBBER Mallet OR SOFT WOOD. FIG.2
- 3) DRILL TWO 5/32" HOLES THROUGH THE BOTTOM FLANGE AND THE BOTTOM OUTSIDE PLANK FLANGES. INSTALL TWO 3/16" x 1/4" RIVETS. (2 PER PLANK)

**END CAP DETAIL**

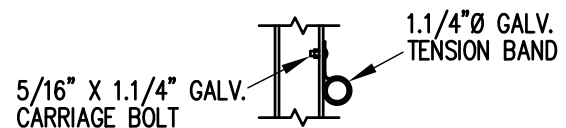
N.T.S.



**TOP RAIL**

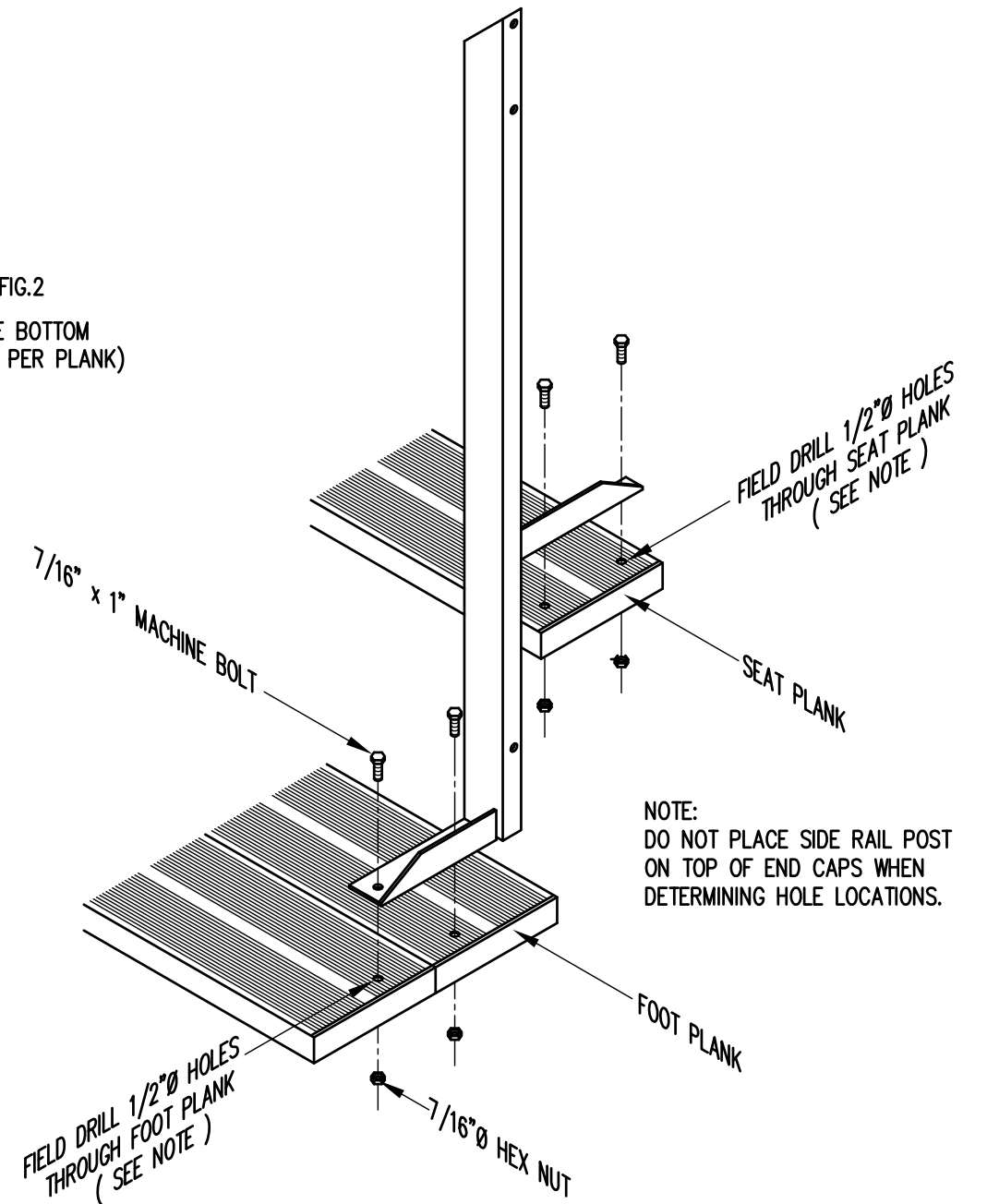


**MID RAIL**



**LOWER RAIL**

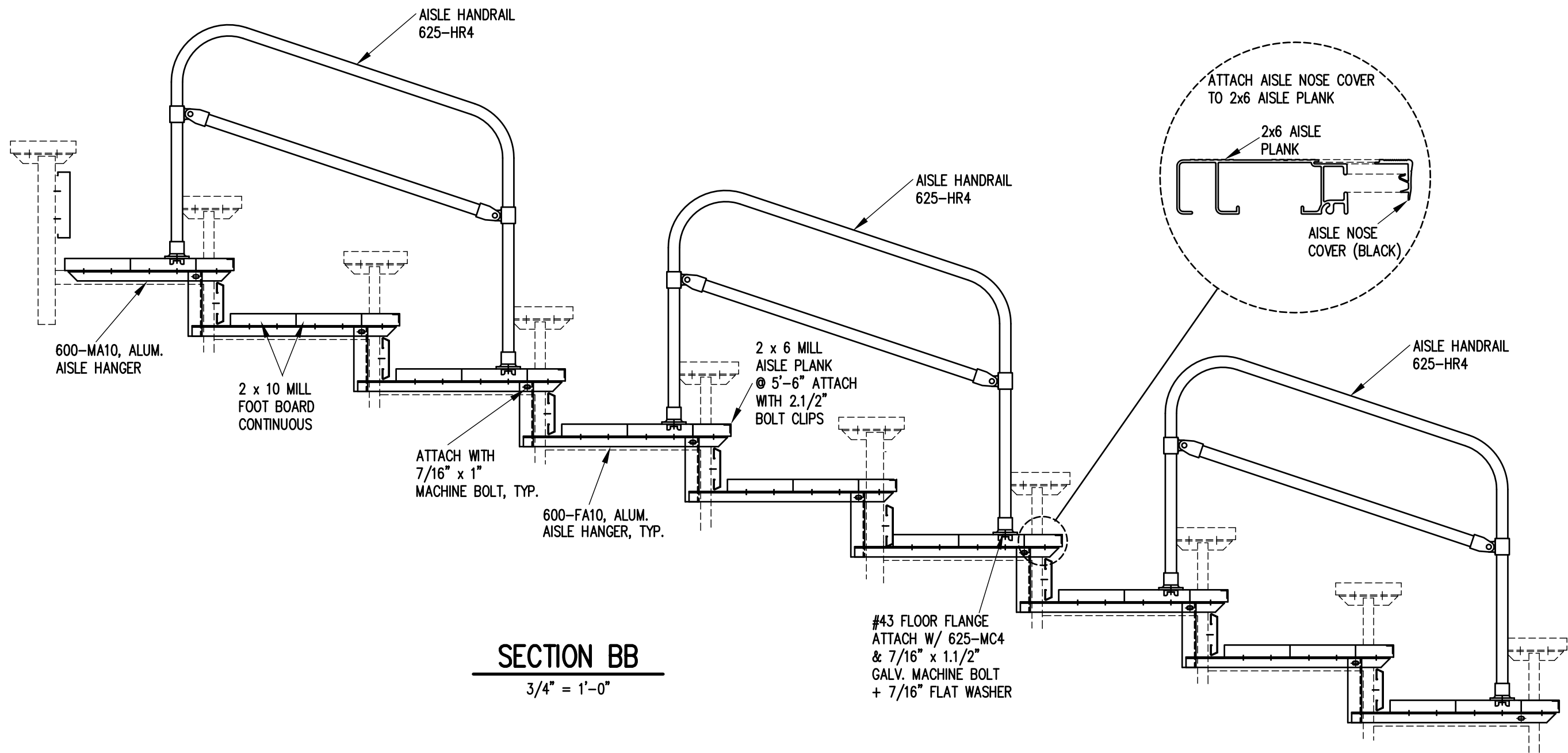
3/4" = 1'-0"



**TYP. SIDE RAIL POST ATTACHMENT**


1" = 1'-0"

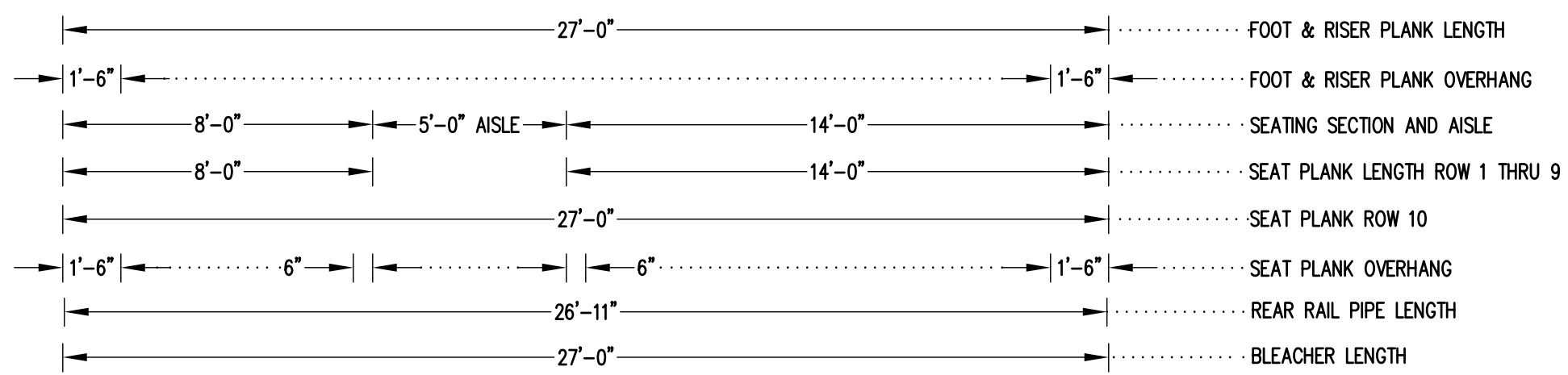
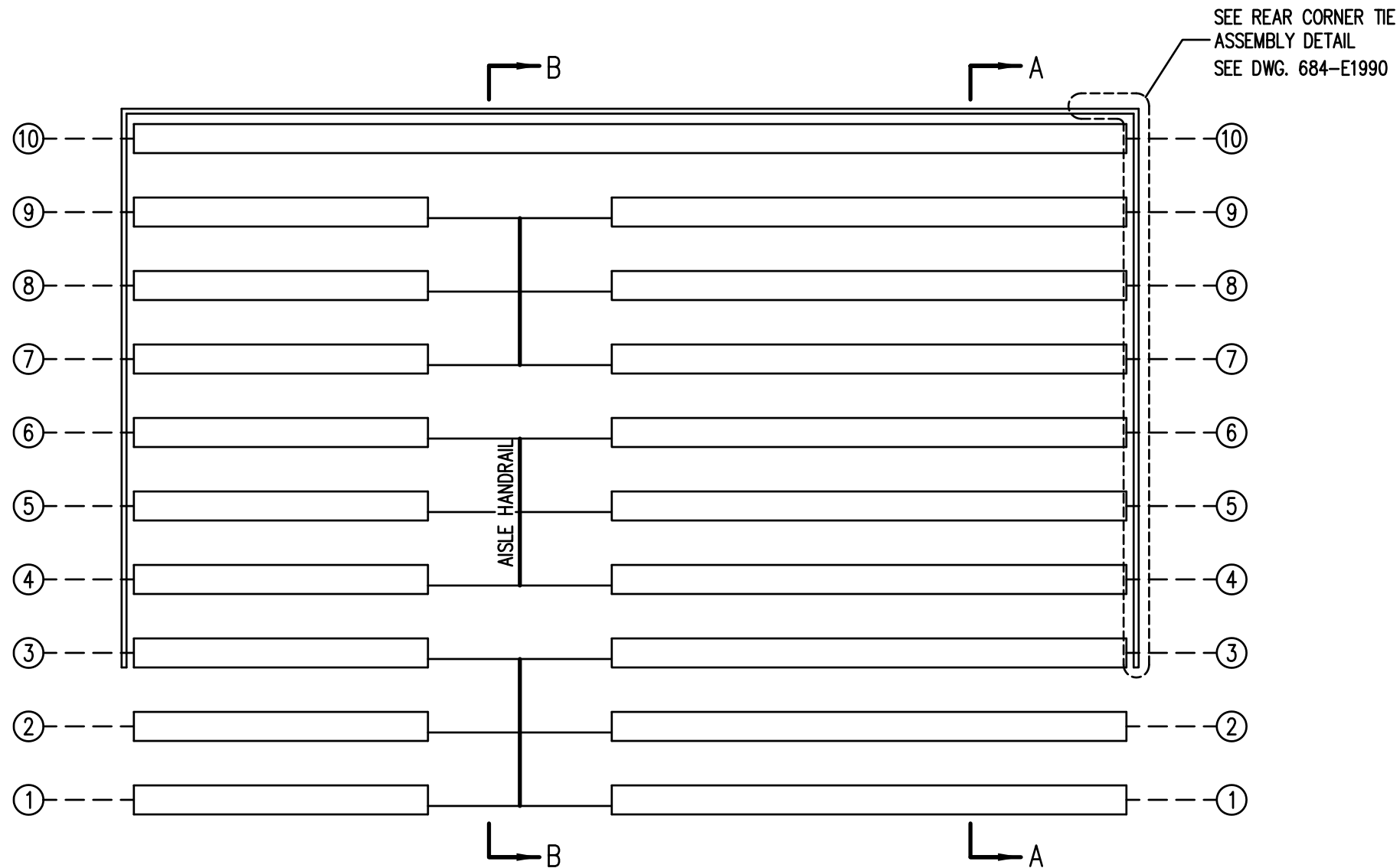
		P.O. BOX 118 GENEVA, ALABAMA 36340 334-684-2296			
		SCALE	AS NOTED	REVISIONS	BY
DATE	11/2/00	SIDE GUARDRAIL TO OUTSIDE		WHW	03/02
DR'N	SS	CKD			
AP'VD					
TITLE				NO.	
TYPICAL DETAILS				684-E1990	



**SECTION BB**


3/4" = 1'-0"

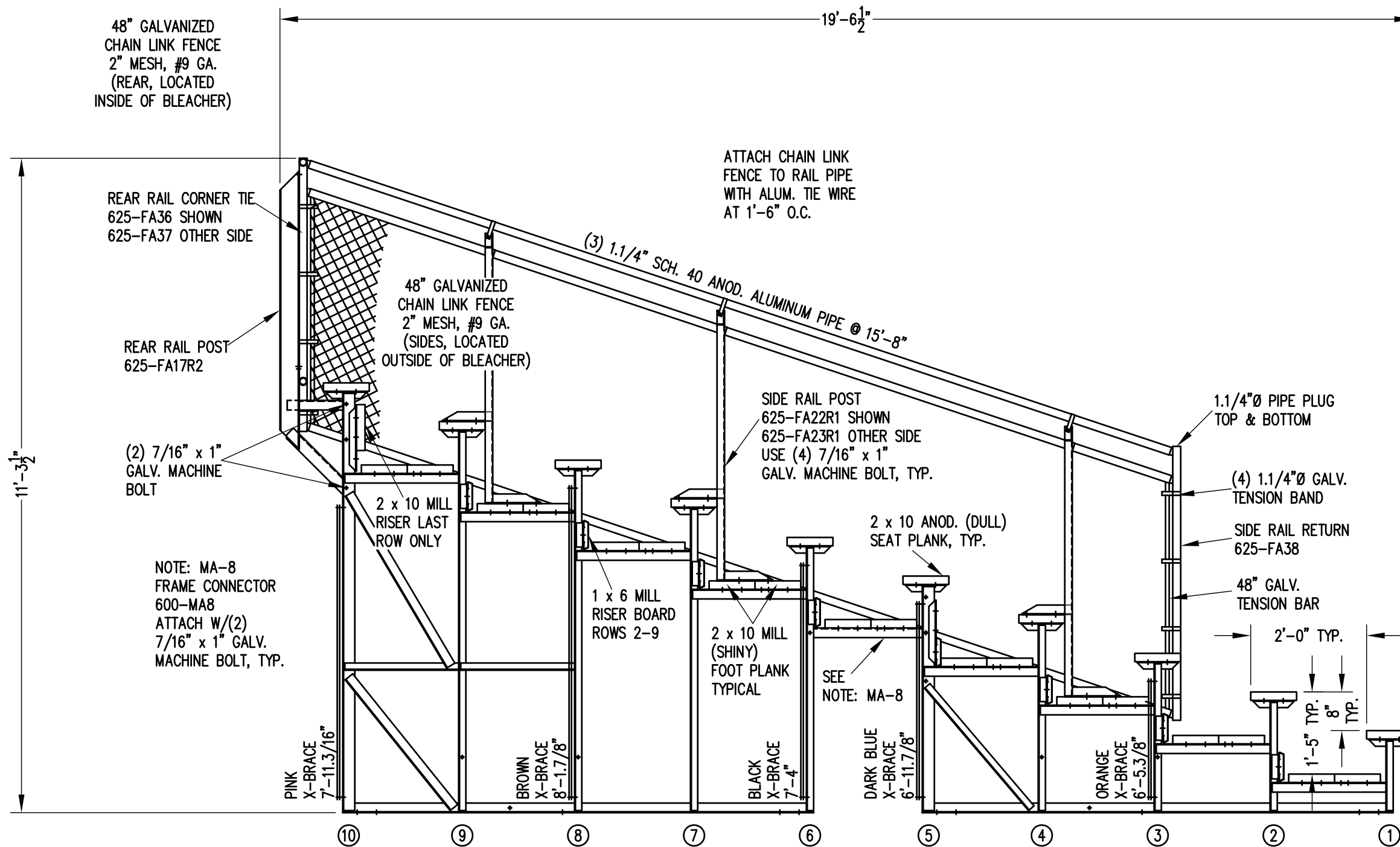
		<b>Outdoor Aluminum</b>		P.O. BOX 118 GENEVA, ALABAMA 36340 334-684-2296	
SCALE	3/4"=1'-0"	REVISIONS		BY	DATE
DATE	8/24/99	AISLE NOSE COVER		WHW	03/02
DR'N	SS	CKD			
AP'VD					
TITLE				NO.	
10 ROW AISLE SECTION				684-E1996	



**SEATING PLAN**


1/4" = 1'-0"  
144 NET SEAT @ 18" PER SEAT

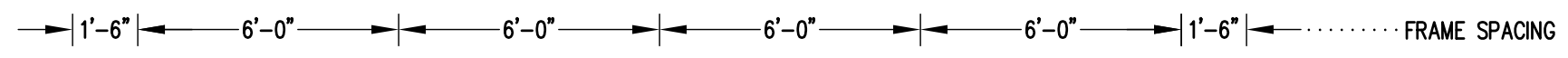
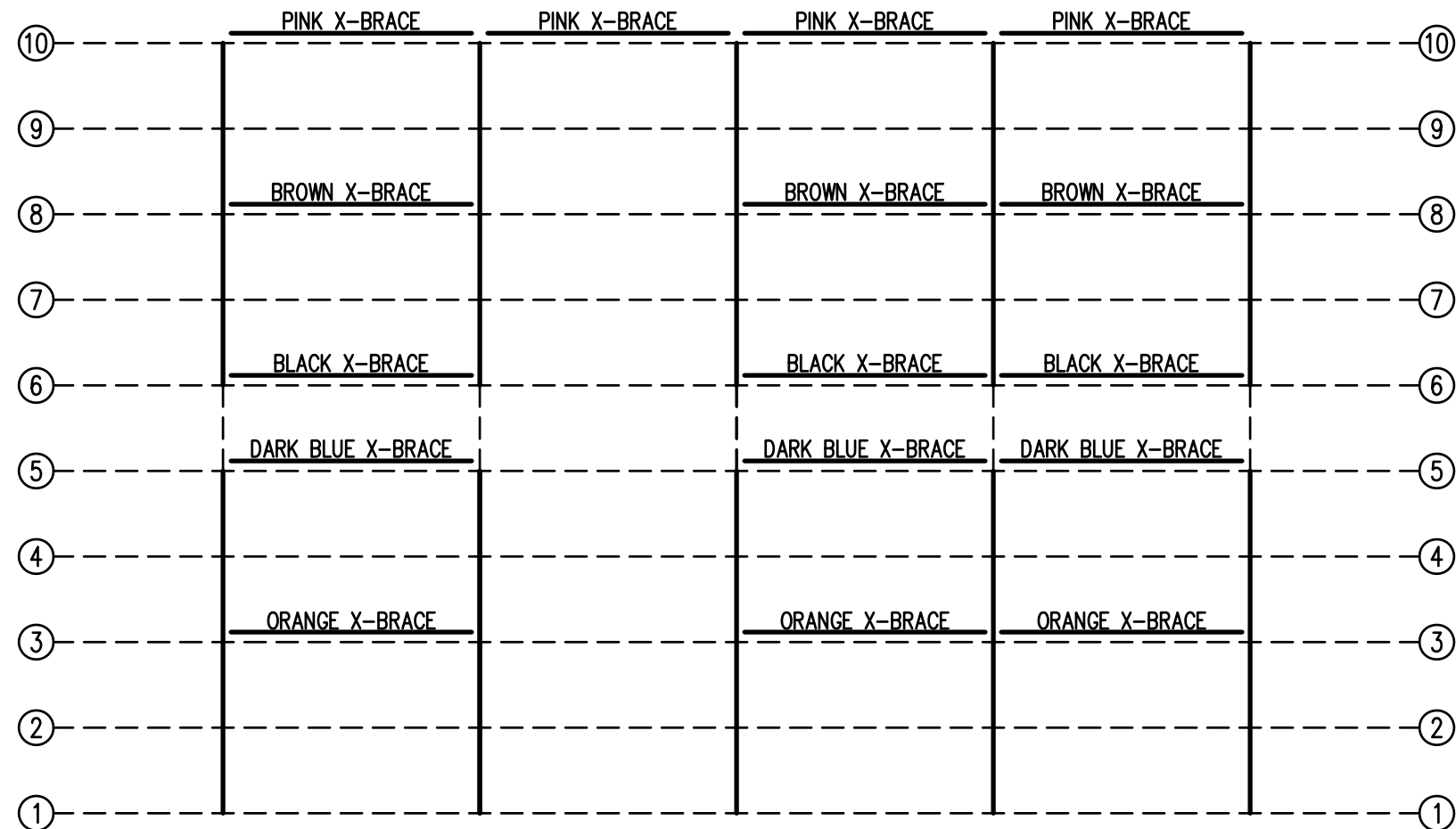
		<b>Outdoor Aluminum</b> P.O. BOX 118 GENEVA, ALABAMA 36340 334-684-2296		
				SCALE 1/4"=1'-0"
DATE 12/13/00	SIDE GUARDRAIL TO OUTSIDE		WHW	03/02
DR'N SS CKD				
AP'VD				
TITLE			NO.	
DLWA 10-27 SEATING PLAN W/AISLE			684-E2113	



**SECTION AA**

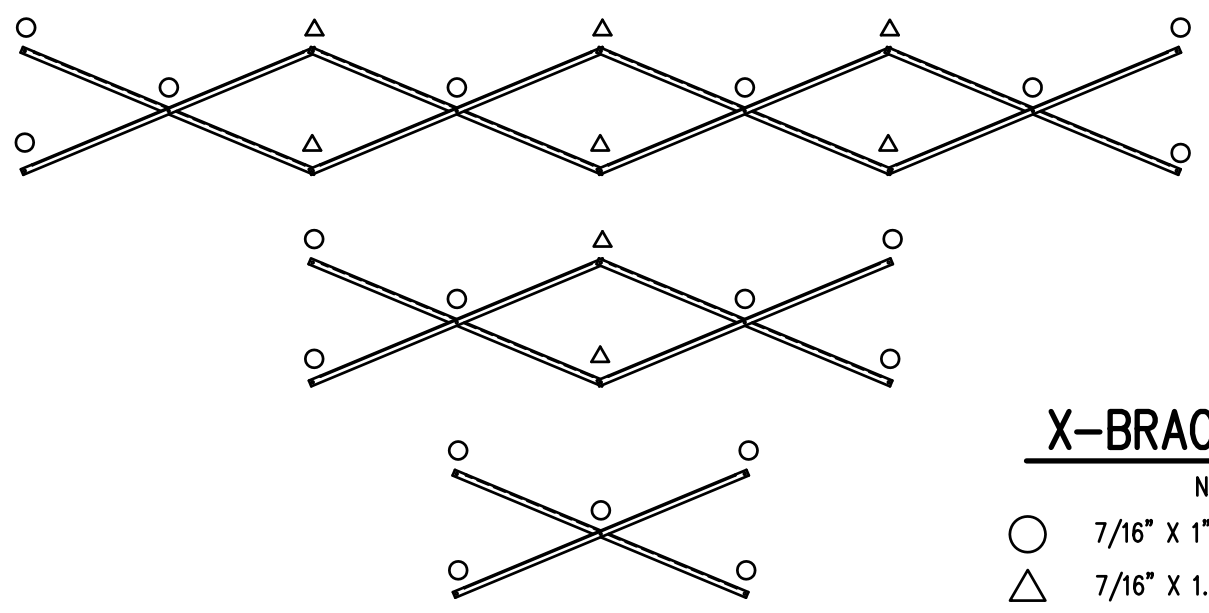
1/2" = 1'-0"

		<b>Outdoor Aluminum</b> P.O. BOX 118 GENEVA, ALABAMA 36340 334-684-2296			
				SCALE	REVISIONS
SCALE	1/2" = 1'-0"				
DATE	11/30/00	X-BRACE FROM BLUE TO DARK BLUE	CHM	03/97	
DR'N	SS CKD	SIDE GUARDRAIL TO OUTSIDE	WHW	03/02	
AP'VD		FOOTBOARD SUPPORT, FA17R2, FA22R1, MA-8	RS	09/06	
TITLE				NO.	
DLW 10 ROW SECTION DOUBLE FOOTBOARD				684-E2123	



**FRAMING PLAN**

1/4" = 1'-0"



**X-BRACE DETAIL**

N.T.S.

- 7/16" X 1" GALV. MACH. BOLT
- △ 7/16" X 1.1/2" GALV. MACH. BOLT

		P.O. BOX 118 GENEVA, ALABAMA 36340 334-684-2296	
		SCALE AS NOTED	
DATE 11/29/00	REVISIONS		BY
DR'N SS CKD	AP'VD		DATE
TITLE DLWA 10-27 FRAMING PLAN W/AISLE			NO. 684-E2153